

EXCITING NEWS!

2023 STEEL CITY ROAD PAVING PROJECT IS UNDERWAY!

**LOWER SAUCON TOWNSHIP IS EXCITED TO
ANNOUNCE THE STEEL CITY PAVING HAS BEGUN.**

**LOWER SAUCON TOWNSHIP COUNCIL VOTED
UNANIMOUSLY AT THEIR JUNE 26TH MEETING
TO APPROVE THE CONTRACT WITH BRACALENTE
CONSTRUCTION, INC. THE BID RECEIVED TO
COMPLETE THIS PROJECT WAS IN THE AMOUNT
OF \$826, 627.50.**

ROADS TO BE PAVED

(SEE MAP AND PICTURES BELOW)

ADAMS AVE.

MIXSELL AVE

JOHNSTON AVE.

SNYDER AVE.

NEMETH DR.

JEFFERSON AVE.

SCHWAB AVE.

FRITZ AVE.

MATHEWS AVE.

ROBERTS AVE.

GAWELL AVE.

IVYWOOD AVE

SAUCON AVE



LOWER SAUCON TOWNSHIP

3700 OLD PHILADELPHIA PIKE

BETHLEHEM, PA 18015

Steel City Paving Project



Snyder Ave.

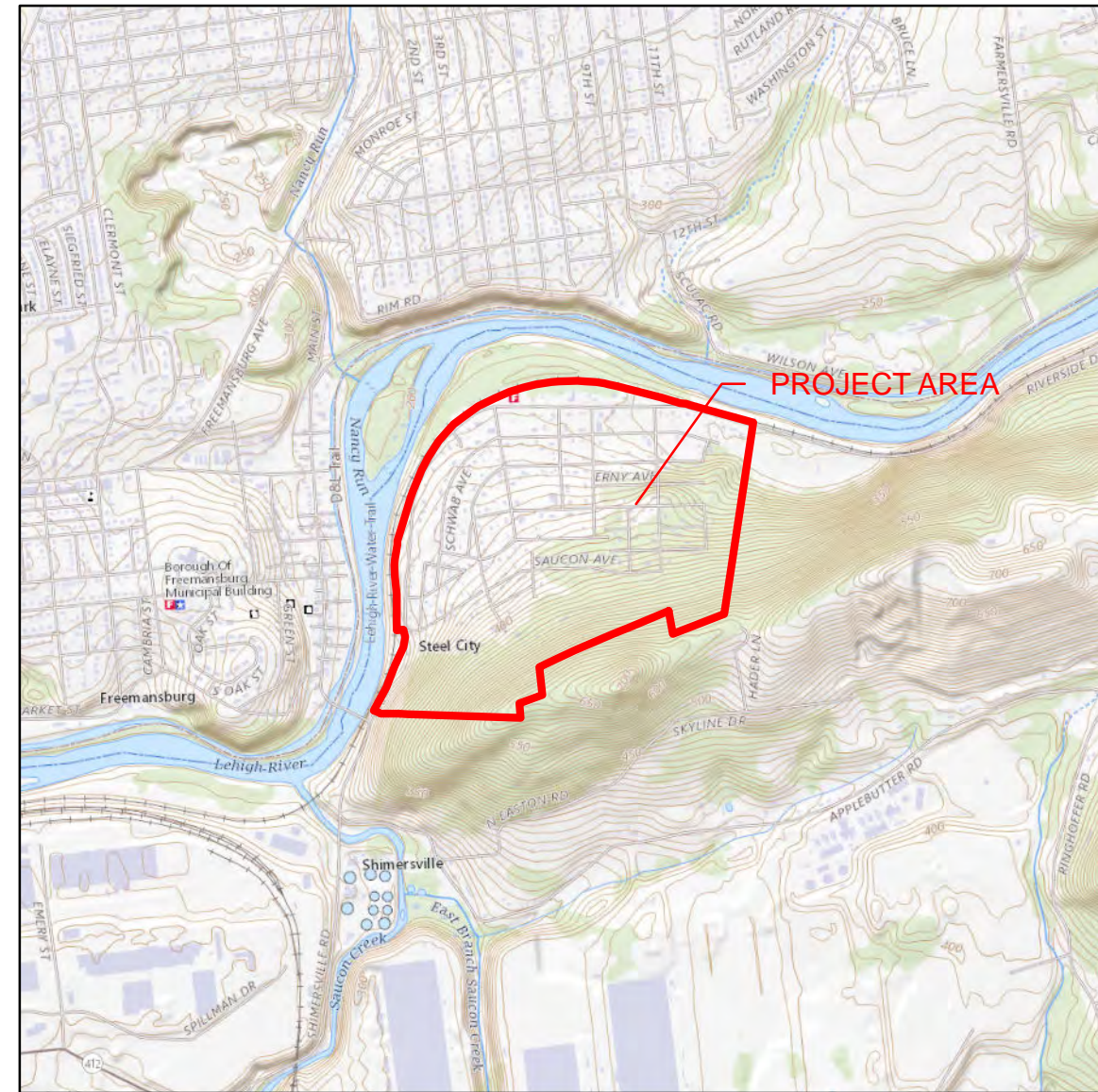


Mixsell Ave.



Adams Ave.

SEPTEMBER 13, 2023



LOCATION MAP
1 inch = 2,000 feet

Legend

- Inlet
- Manhole
- Headwall
- Outfall
- Existing Storm Sewer
- Stream
- Steel City Area

Paving Improvements

- Mill, Binder and overlay
- Scratch and Overlay



Paving Improvement	Road	Approx. SqYds
Mill, Binder & Overlay	Adams Ave	3100
Mill, Binder & Overlay	Mixsell Ave	900
Mill, Binder & Overlay	Johnston Ave	4519
Mill, Binder & Overlay	Snyder Ave	2449
Mill, Binder & Overlay	Nemeth Dr	764
Scratch & Overlay	Jefferson Ave	1390
Scratch & Overlay	Johnston Ave	2420
Scratch & Overlay	Mixsell Ave	3443
Scratch & Overlay	Schwab Ave	7391
Scratch & Overlay	Fritz Ave	1329
Scratch & Overlay	Mathews Ave	3854
Scratch & Overlay	Roberts Ave	2124
Scratch & Overlay	Gawell St	536
Scratch & Overlay	Ivywood Ave	1784
Scratch & Overlay	Saucon Ave	5948
Approx. Total		41951

**LOWER SAUCON TOWNSHIP
NORTHAMPTON COUNTY
PENNSYLVANIA**

**PLANT TITLE: PAVING AND STORM SEWER PLAN
PROJECT TITLE: STEEL CITY PROJECT**

THIS DOCUMENT IS THE PROPERTY OF HANOVER ENGINEERING ASSOCIATES. NO PART OF THIS DOCUMENT IS TO BE REPRODUCED OR TRANSMITTED IN ANY FORM OR BY ANY MEANS, ELECTRONIC OR MECHANICAL, INCLUDING PHOTOCOPYING, RECORDING, OR BY ANY INFORMATION STORAGE AND RETRIEVAL SYSTEM. WITHOUT THE WRITTEN PERMISSION OF HANOVER ENGINEERING ASSOCIATES, THIS DOCUMENT IS NOT TO BE PUBLISHED AND ALL RIGHTS ARE RESERVED BY HANOVER ENGINEERING ASSOCIATES. ANY REPRODUCTION OR ALTERATION OF THIS DOCUMENT WITHOUT THE WRITTEN PERMISSION OF HANOVER ENGINEERING ASSOCIATES IS STRICTLY PROHIBITED. THIS DOCUMENT IS NOT TO BE USED FOR ANY OTHER PROJECT WITHOUT THE WRITTEN PERMISSION OF HANOVER ENGINEERING ASSOCIATES. ANY REPRODUCTION OR ALTERATION OF THIS DOCUMENT WITHOUT THE WRITTEN PERMISSION OF HANOVER ENGINEERING ASSOCIATES IS STRICTLY PROHIBITED. THIS DOCUMENT IS NOT TO BE PUBLISHED AND ALL RIGHTS ARE RESERVED BY HANOVER ENGINEERING ASSOCIATES. ANY REPRODUCTION OR ALTERATION OF THIS DOCUMENT WITHOUT THE WRITTEN PERMISSION OF HANOVER ENGINEERING ASSOCIATES IS STRICTLY PROHIBITED. THIS DOCUMENT IS NOT TO BE USED FOR ANY OTHER PROJECT WITHOUT THE WRITTEN PERMISSION OF HANOVER ENGINEERING ASSOCIATES.

HanoverEngineering

Bethlehem Office
252 Brodhead Road, Suite 100
Bethlehem, PA 18017-6944
P: 610.691.5644
F: 610.691.6968
HanoverEng.com

Checked By: JRP
Drawn By: JRP
Date: 05/10/2023
Scale: 1" = 200'
Project No.: LS23-17
Sheet No.: 01 of 02

North Arrow

Scale: 1 inch = 200 feet