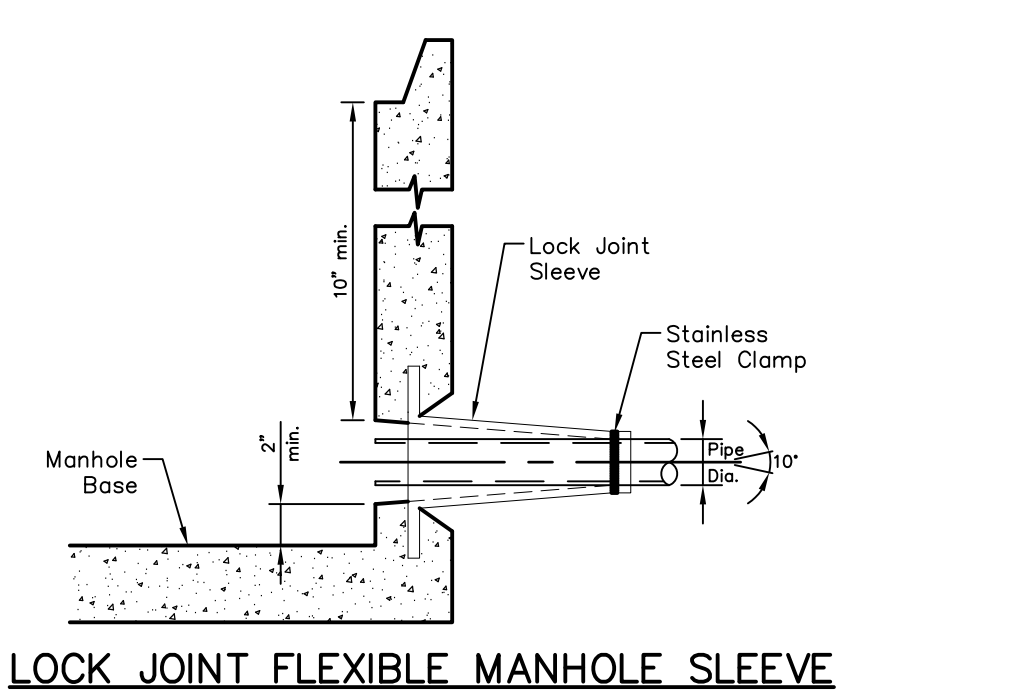
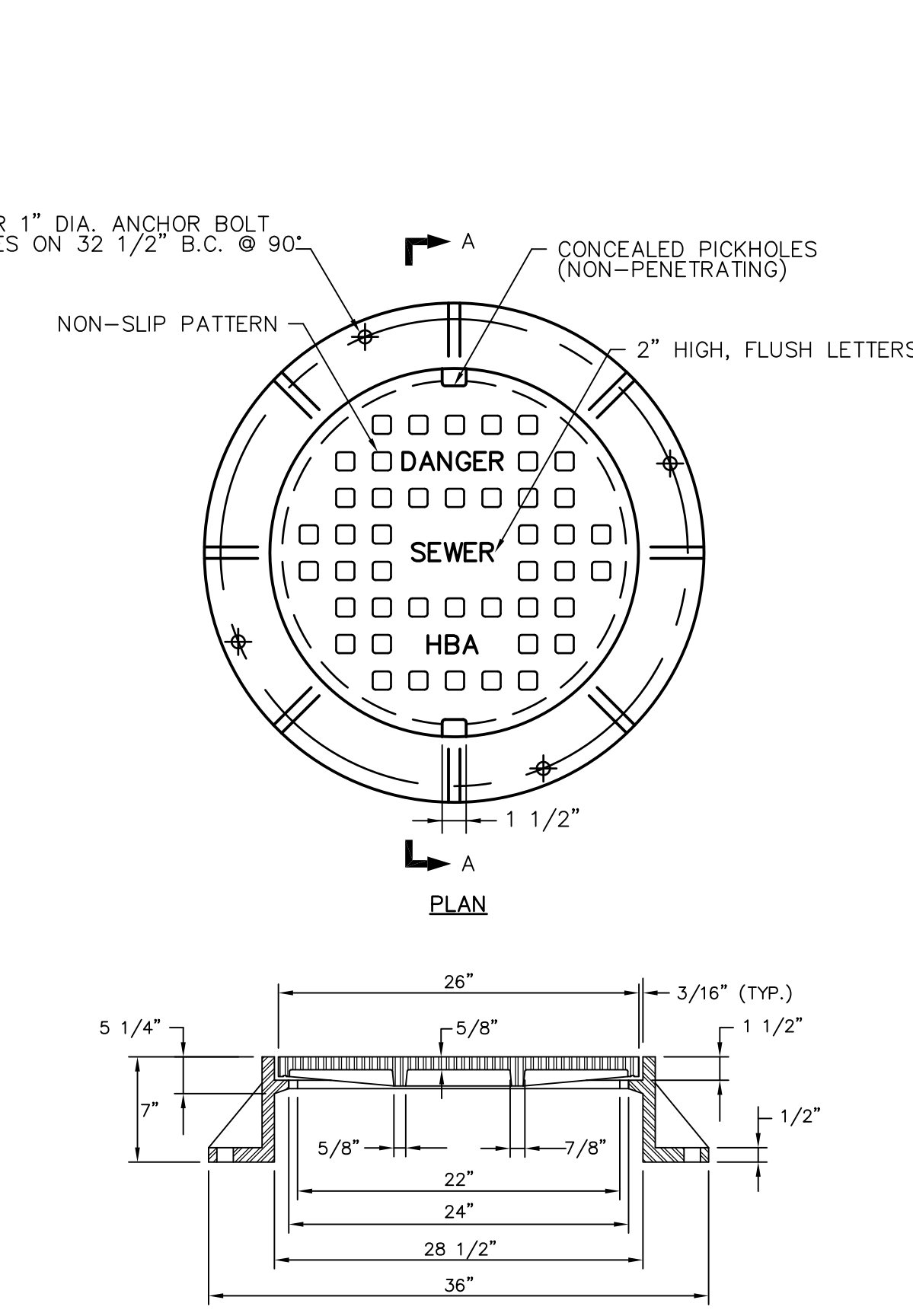


- NOTES:**
- All backfill material is subject to architect/engineer approval.
  - Class 'A' Bedding: approved native soil, coarse sand, gravel, or crushed stone, having a maximum stone size of 1/2 inch.
  - Ordinary Backfill: clean dry earth w/ a maximum stone size of 6 inches.
  - Within road right-of-way, surface restoration, backfill materials, & methods shall meet the appropriate municipal or Penn-DOT requirements.

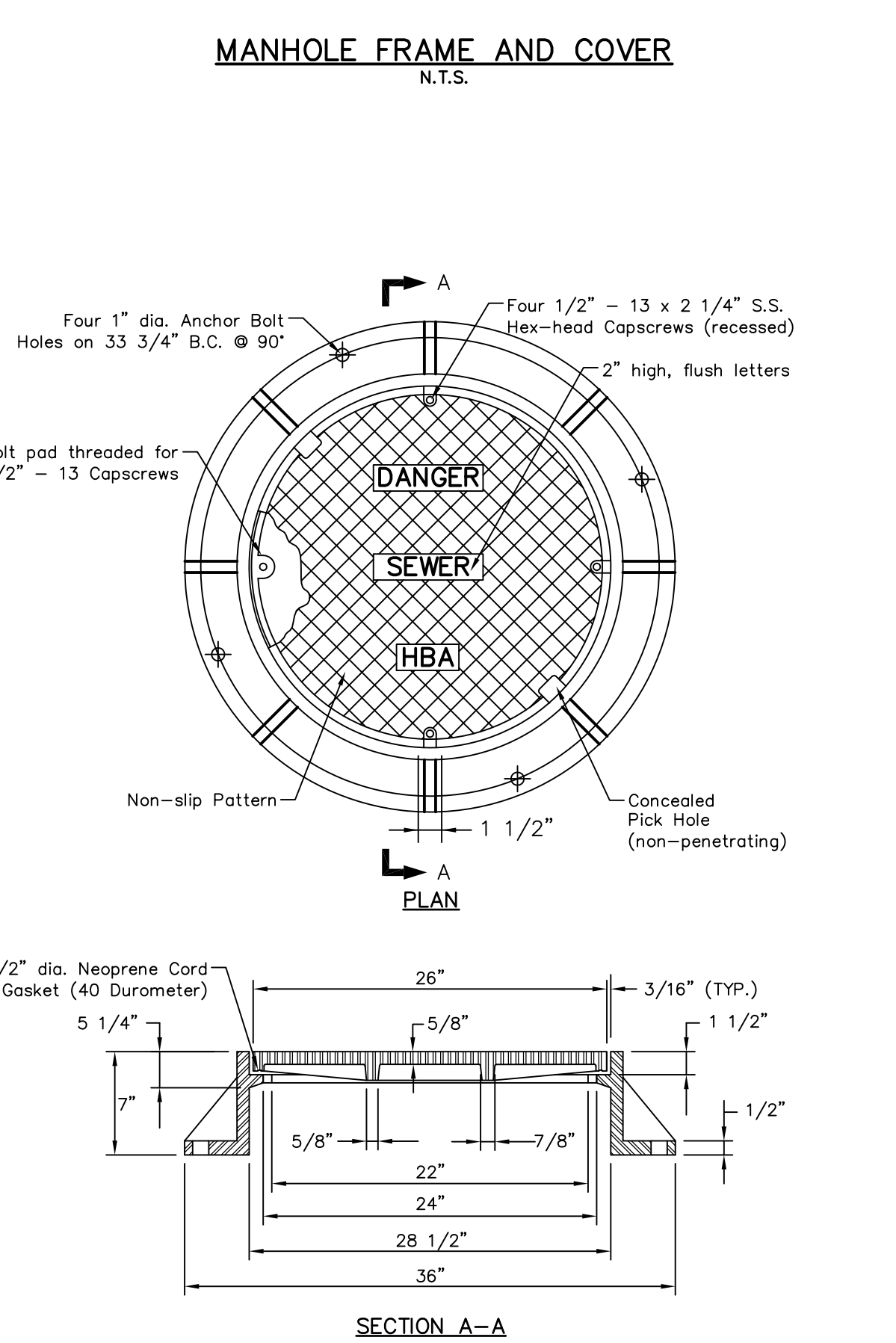


**LATERAL WYE**  
N.T.S.

PART #	SIZE	A	B	C	D	H	D1	D2	L	C-900 PIPE (C-900) (C-900) (C-900)
301-0806	8 x 6	5.38	8.8	21.79	11.03	10.15	8.88	8.2	6.050	6.900
301-0804	8 x 4	5.38	6.94	21.79	11.03	13.29	11.10	6.32	6.050	6.800
301-0606	6 x 6	4.78	2.13	21.28	11.72	9.60	8.88	4.7	6.900	6.900
301-0604	6 x 4	4.78	2.13	21.28	11.72	14.83	8.88	6.32	6.900	6.800
301-0404	4 x 4	4.78	1.50	16.75	6.24	6.74	6.32	3.4	4.800	4.800

SELECTION CONDITIONS:  
MATERIALS: ASTM D1784  
JOINTS: ASTM D3128  
GASKETS: ASTM F-477  
THICKNESS: SOR 18

ALL DIMENSIONS IN INCHES  
NON-PRESSURE RATED



- SYMBOLS**
- Existing Contour
  - Proposed Contour
  - Township Line
  - Match Line
  - Existing Gas Line
  - Proposed Gas Line
  - Existing Sanitary Sewer Line
  - Proposed Sanitary Sewer Line
  - Existing Water Line
  - Proposed Water Line
  - Proposed Fire Hydrant
  - Existing Features
  - Proposed Features
  - Easement Line
  - Proposed Living Retaining Wall
  - Easement Line
  - Proposed Building

**ENGINEER'S CERTIFICATION**  
I hereby certify that I have designed all site and public improvements and have identified all floodplain limits as required for this subdivision or land development.

Registered Engineer  
Registration No. PE036237E

CALL BEFORE YOU DIG!  
PENNSYLVANIA LAW REQUIRES  
3 WORKING DAYS NOTICE  
FOR CONSTRUCTION PHASE  
AND 10 WORKING DAYS IN  
DESIGN STAGE.

**STOP! CALL!**  
PENNSYLVANIA ONE CALL SYSTEM  
1-800-242-1776  
PROJECT SERIAL NO.

**ME** Mease Engineering, P.C.  
office (215) 536-7005  
Fax (215) 536-8881

816 W. Broad Street  
Quakertown, PA 18951

PROFESSIONAL ENGINEERING & SURVEYING

NO.	DATE	DESCRIPTION	BY

**Steel Club Land Development PHASE 2**  
Lower Saucon Township, Northampton County, Pennsylvania

SCALE: As Noted  
DATE: 20 Feb '20  
DRAWN BY: TNF  
FILE: 1419009-10

OWNERS OF RECORD: Steel Land LLC  
8052 William Penn Highway  
Easton, PA 18045

**Utilities Plan - Ross Hill**

SHEET 9 of 19