

Pennsylvania Archaeological Site Survey

The Pennsylvania Archaeological Site Survey (PASS) is our statewide inventory of over 25,000 recorded archaeological sites, representing 16,000 years of Pennsylvania's history. Archaeological site information has been collected across Pennsylvania since the 1940s. The inventory is maintained and made available for the benefit of all Pennsylvanians.

Where can I learn more?

Although site locations are not made public, information about the sites can be viewed on the CRGIS website for free at crgis.state.pa.us. New sites are added every week.

How can I be involved?

We welcome site information from everyone, including museums, historical societies, students, and collectors! Recording what you have found—and where you found it—is an important step in learning about the past and protecting these important places. Please contact us for more information about recording your finds.

What does the PASS program offer?

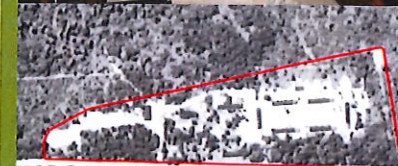
- Technical assistance documenting sites and planning research surveys
- Educational lectures about Pennsylvania archaeology
- Access to full-detail site information for upper-level college research projects
- Training on site documentation methods
- Site visits
- Collection documentation

(717) 783-8947 | ra-crgis@pa.gov | pahistoricpreservation.com

www.phmc.pa.gov/Preservation/Cultural-Resources-GIS/Pages/Recording-Resources.aspx



Pennsylvania State Historic Preservation Office
PENNSYLVANIA HISTORICAL AND MUSEUM COMMISSION



Bull Hill CCC Camp, Warren County



Pennsylvania Above Ground Survey

The Pennsylvania Above Ground Survey (PAGS) is the PA State Historic Preservation Office's (PA SHPO) program to document the commonwealth's historic and cultural places in Pennsylvania and share that information with the public. PAGS records information on the types of older and historic places and spaces that Pennsylvanians value, such as buildings, farms, bridges, parks, neighborhoods, landscapes, and more!

Do you know anything about my favorite place? How can I find out more about Pennsylvania's older & historic places?

When information on historic and cultural places is sent to the PA SHPO, it is added to Pennsylvania's online Cultural Resources GIS (CRGIS) interactive map. CRGIS can be used to find information about a particular place, and, in many cases, users can see historic and current photographs and read about the history of that place. CRGIS can be accessed by the public for free at crgis.state.pa.us.

Can I contribute?

Absolutely! And there are no special skills required. Throughout the commonwealth, Pennsylvanians are dedicating their time to photograph and document the historic and cultural places that they care about, and they are sharing their work with the PA SHPO.

How do I get started?

We would love to help you – private citizens, museums, historical societies, students, everyone! – contribute to recording Pennsylvania's history for future generations. Please contact us for more information!

(717) 783-8947 | ra-crgis@pa.gov | pahistoricpreservation.com
www.phmc.pa.gov/Preservation/Cultural-Resources-GIS/Pages/Recording-Resources.aspx



Pennsylvania State Historic Preservation Office
PENNSYLVANIA HISTORICAL AND MUSEUM COMMISSION

