



pennsylvania

DEPARTMENT OF ENVIRONMENTAL PROTECTION



Bureau of Waste Management

Bethlehem Landfill Company LMIP Meeting 02/17/21

PA Department of Environmental
Protection

2 Public Square

Wilkes-Barre, PA 18701-1915

(570) 826-2511

Tom Wolf, Governor

Patrick McDonnell, Secretary

Where are we now?

Application submitted (December 14, 2020)

Local Municipality Involvement Process

- The Department will meet and consult with local municipalities potentially affected by certain proposed municipal waste disposal or processing permits
- It is the Department's intent that no new applicable municipal waste application shall be further reviewed unless and until the concerns of local municipalities have been addressed by the Department in accordance with applicable law.
- Negotiate alternative project timeline

Administrative Completeness review

What comes next?

- Completeness review
 - Distribute copies of application
- EAP/Harms vs. Benefits Analysis
 - 60 day comment period
 - Public meeting (if requested)
- Applicant response
- 2nd EA Review
 - Public hearing (if requested)
- if necessary issue a Pre-Denial letter

Environmental Assessment Process

Part of the Bethlehem Landfill expansion application that will be considered early is the review process to evaluate harms and benefits directly related to the proposed project.

Environmental Assessment Process

General Principles:

- Compare harms and benefits with conditions that would exist if the proposal did not go forward
- If the facility has undergone a previous environmental assessment, focus only on the harms and benefits related to the current proposal

- Harms and benefits can be Environmental or Social & Economic
- Identify all known and potential harms associated with the project and propose mitigation.
 - Mitigation= measures to lessen or eliminate harm
- Identify the environmental and social & economic benefits associated with the project.
- Demonstrate that the benefits of the project clearly outweigh the known and potential harms.

How are harms and benefits identified?

- By the applicant
- By public comment
 - letters/phone calls/e-mails
 - Potentially public meeting/hearing

How are harms and benefits are identified?

- By DEP
 - Form D - Environmental Assessment
 - Compliance History
 - By Other Agencies, i.e., PHMC(PA Historical and Museum Commission), PennDOT, County Conservation, ...

Environmental Impact Areas

Traffic

Aesthetics

Air Quality

Water Quality

Rivers and Stream

Parks

Fish and Wildlife

Airports

Wetlands

Protected areas

Plants

Water Uses

Aquatic Habitat

Land Use

Local Agreements

Historic and Archaeological Sites

Threatened/Endangered Species

Other features deemed appropriate by DEP or the Applicant

DEP Evaluation

The DEP will review the proposed mitigation for known and potential harms and determine if that mitigation is adequate to protect the public health, safety and welfare, and the environment. We consider the Duration, Frequency and Intensity of the benefit or harm, the Reach, and the Sensitivity of receptors

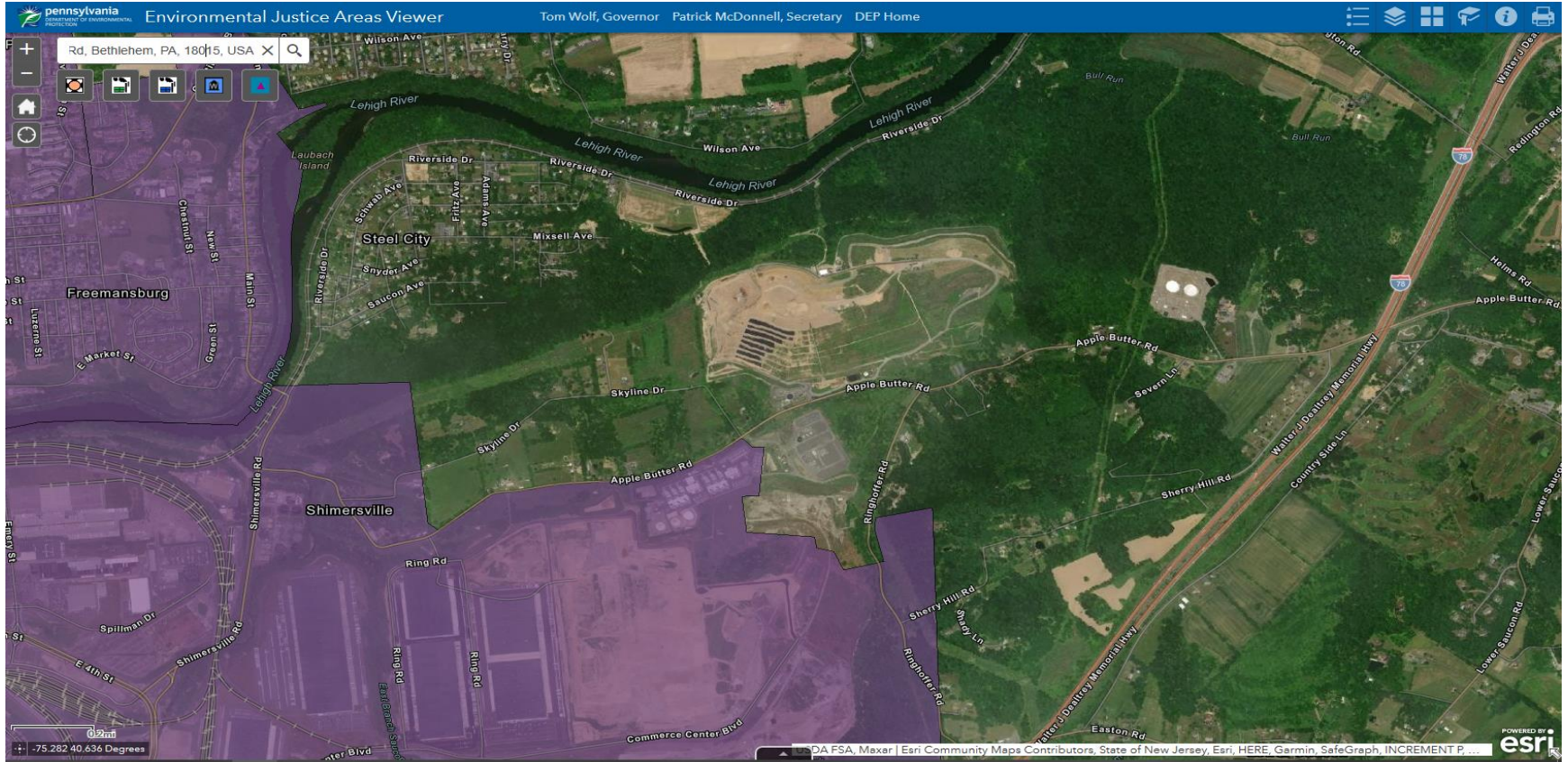
DEP Evaluation

- Did the Applicant propose adequate mitigation?
- Are the identified benefits a result **OF** the project?
- Do the benefits of the project clearly outweigh the known and potential harms of the project?

Environmental Justice Policy

- Enhanced public participation activities in areas with specific boundaries and demographic characteristics in close proximity to the facility
 - Things like – fact sheet, plain language summary, availability of the application in other locations.

Environmental Justice Policy



DEP Evaluation

- Decision on EA
 - Denial
 - Approval
- If approved, the 1st technical review will begin. As appropriate, the technical review could require up to two review letters prior to making a decision on the permit. This phase of the review also allows for public comments that are technical in nature.
- Final Decision - Permit Issuance or Denial

Availability of Application

- DEP's Wilkes-Barre Office
- Lower Saucon Township
- Northampton County

These are the typical options. Our DEP office is currently closed to the public. Posting application to the DEP website is an option.

Handouts available upon request and on-line

- Local Municipal Involvement Process
- Policy on Public Participation
- Environmental Justice Policy
- Environmental Assessment Process
- Permit Review Process



pennsylvania

DEPARTMENT OF ENVIRONMENTAL PROTECTION



Bureau of Waste Management

Roger Bellas
PA Department of Environmental
Protection
2 Public Square
Wilkes-Barre, PA 18701-1915
rbellas@pa.gov