

**LOWER SAUCON TOWNSHIP
ALUMINUM PEDESTRIAN CROSS WALK BRIDGE
FOR BID OPENING JULY 15, 2010**

ADDENDUM DATED JULY 13, 2010

- Q:** Design work lists that a scour analysis must be included. Has a hydrology & hydraulics study been done?
A: The study has been done and is attached.
- Q:** Is a building permit required?
A: No
- Q:** There is no line item for the bridge materials bid breakdown. Where should we include the cost of the bridge?
A: Under the Bridge Installation section. Revised Exhibit D attached.
- Q:** What is the scope of work for the “Lab Testing” that is listed on the bid breakdown form:
A: It is up to the design engineer to determine if any lab testing needs to be done.
- Q:** Is grading and installation of the walking trail up to the bridge to be done by other?
A: The Township Public Works Department will construct the path.
- Q:** In the Bridge Details section of the bid documents it states “the railings shall be a railing as presented in Exhibit B”. Please clarify, Exhibit is a site plan.
A: Please refer to Exhibit C for the bridge railings.
- Q:** Have boring tests been completed for contractor review?
A: Boring tests have not been done.
- Q:** If no boring tests have been done, to what soil-bearing shall the footings/abutments be designed?
A: The design engineer needs to determine the necessary soil bearing specification.
- Q:** Has water shed analysis been completed?
A: As stated above the hydrology & hydraulics study has been done and is attached.
- Q:** What elevation shall the bridge deck be above the stream bed?
A: See the bridge permit (attached).
- Q:** Who shall provide survey to locating bridge?
A: The Township Engineer (Hanover Engineering) should do stakeout of the bridge.
- Q:** What permits have been obtained for construction?
A: NCCD approval letter and DEP permit have been obtained.
- Q:** Has E & S/Wetlands Disturbance Permitting been complete with the local authorities?
A: E & S/Wetlands permits are complete.
- Q:** Have temporary easements been obtained to allow access to both sides of the stream?
A: The Township owns both sides of the stream. No easements are necessary.

Q: Are there any restrictions on the Contractor for clearing of trees?

A: The Township will clear the trees.

Q: What measures are required to restore the site to existing conditions?

A: The abutments must be backfilled and disturbed areas stabilized.

Q: The bid documents refer to Dept. of Labor minimum wages but no wage determination is provided. What wage determination shall be used.

A: Prevailing Wage information is attached.

EXHIBIT D

Lower Saucon Township
Bid and Agreement

Lower Saucon Township
Prefabricated Aluminum Cross Walk Bridge Itemized Budget
Bid Opening

	Price
Design Engineering	
Lab Testing	
Permit costs	
Abutment Installation	
*excavation equipment	
*materials	
*labor	
Traffic Control	
*equipment	
*labor	
Bridge Installation	
*bridge cost	
*equipment cost	
*labor costs	
Delivery	

Base Bid Total for proposed purchase \$_____

*The Bidder is responsible to evaluate site infrastructure prior to bid submission. Errors in calculations are the responsibility of the bidder. Bidder is required to fill out the itemized budget sheet with bid proposal.

PREVAILING WAGES PROJECT RATES

Project Name: Polk Valley Park Pederstrian Bridge Installation

Awarding Agency: Lower Saucon Township

Contract Award Date: 7/21/2010

Serial Number: 10-04756

Project Classification: Highway

Determination Date: 7/8/2010

Assigned Field Office: Scranton

Field Office Phone Number: 570-963-4577

Toll Free Phone Number: 877-214-3962

Northampton County

Building	Effective Date	Expiration Date	Hourly Rate	Fringe Benefits	Total
Asbestos & Insulation Workers	6/29/2009		\$29.88	\$18.88	\$48.76
Asbestos & Insulation Workers	6/28/2010		\$30.63	\$20.13	\$50.76
Asbestos & Insulation Workers	6/27/2011		\$33.88	\$18.88	\$52.76
Boilermaker (Commercial, Institutional, and Minor Repair Work)	1/1/2010		\$23.59	\$15.15	\$38.74
Boilermakers	1/1/2010		\$38.08	\$25.29	\$63.37
Bricklayers, Stone Masons, Pointers, Caulkers, Cleaners	5/3/2009		\$29.05	\$14.98	\$44.03
Bricklayers, Stone Masons, Pointers, Caulkers, Cleaners	10/4/2009		\$29.05	\$15.03	\$44.08
Bricklayers, Stone Masons, Pointers, Caulkers, Cleaners	5/2/2010		\$30.48	\$15.57	\$46.05
Carpenters	5/1/2009		\$30.99	\$19.67	\$50.66
Carpenters	5/1/2010		\$33.34	\$19.67	\$53.01
Carpenters	5/1/2011		\$35.79	\$19.67	\$55.46
Cement Masons	5/1/2009		\$26.43	\$15.51	\$41.94
Cement Masons	5/2/2010		\$27.01	\$15.32	\$42.33
Cement Masons	5/1/2011		\$27.71	\$15.37	\$43.08
Cement Masons	4/30/2012		\$28.41	\$15.42	\$43.83
DockBuilder/Pile Drivers (Building, Heavy & Highway)	7/1/2008		\$37.50	\$25.13	\$62.63
DockBuilder/Pile Drivers (Building, Heavy & Highway)	7/1/2010		\$37.60	\$27.57	\$65.17

PREVAILING WAGES PROJECT RATES

Building	Effective Date	Expiration Date	Hourly Rate	Fringe Benefits	Total
Drywall Finisher	5/1/2009		\$23.31	\$12.57	\$35.88
Drywall Finisher	5/1/2010		\$23.86	\$13.42	\$37.28
Drywall Finisher	5/1/2011		\$23.86	\$15.42	\$39.28
Electric Lineman	5/31/2009		\$37.27	\$15.43	\$52.70
Electric Lineman	5/31/2010		\$35.73	\$17.12	\$52.85
Electric Lineman	5/30/2011		\$36.57	\$17.34	\$53.91
Electric Lineman	11/28/2011		\$37.42	\$17.57	\$54.99
Electric Lineman	5/28/2012		\$38.30	\$17.81	\$56.11
Electric Lineman	11/26/2012		\$39.18	\$18.04	\$57.22
Electricians & Telecommunications Installation Technician	6/1/2009		\$46.86	\$24.02	\$70.88
Electricians & Telecommunications Installation Technician	5/31/2010		\$46.96	\$26.07	\$73.03
Elevator Constructor	1/1/2008		\$37.85	\$16.47	\$54.32
Elevator Constructor	1/1/2010		\$40.08	\$20.24	\$60.32
Elevator Tender (Use Elevator Apprentice or Constructor)	1/1/2005		\$0.00	\$0.00	\$0.00
Floor Layer	5/1/2009		\$28.22	\$21.52	\$49.74
Floor Layer	5/1/2010		\$28.22	\$22.46	\$50.68
Glazier	6/1/2008		\$27.00	\$12.64	\$39.64
Glazier	6/1/2009		\$29.22	\$11.92	\$41.14
Iron Workers (Bridge, Structural Steel, Ornamental, Precast, Reinforcing)	7/1/2008		\$30.30	\$21.92	\$52.22
Iron Workers (Bridge, Structural Steel, Ornamental, Precast, Reinforcing)	7/1/2009		\$33.55	\$21.92	\$55.47
Laborers (Class 01 - See notes)	5/1/2009		\$22.80	\$11.98	\$34.78
Laborers (Class 01 - See notes)	5/1/2010		\$22.80	\$13.68	\$36.48
Laborers (Class 01 - See notes)	5/1/2011		\$22.80	\$15.43	\$38.23
Laborers (Class 02 - See notes)	5/1/2009		\$23.83	\$11.98	\$35.81
Laborers (Class 02 - See notes)	5/1/2010		\$23.83	\$13.68	\$37.51
Laborers (Class 02 - See notes)	5/1/2011		\$23.83	\$15.43	\$39.26
Laborers (Class 03 - See notes)	5/1/2009		\$24.15	\$11.98	\$36.13
Laborers (Class 03 - See notes)	5/1/2010		\$24.15	\$13.68	\$37.83
Laborers (Class 03 - See notes)	5/1/2011		\$24.15	\$15.43	\$39.58
Laborers (Class 04 - See notes)	5/1/2009		\$24.15	\$11.98	\$36.13

PREVAILING WAGES PROJECT RATES

Building	Effective Date	Expiration Date	Hourly Rate	Fringe Benefits	Total
Laborers (Class 04 - See notes)	5/1/2010		\$24.15	\$13.68	\$37.83
Laborers (Class 04 - See notes)	5/1/2011		\$24.15	\$15.43	\$39.58
Laborers (Class 05 - See notes)	5/3/2009		\$26.15	\$12.11	\$38.26
Laborers (Class 05 - See notes)	5/1/2010		\$26.15	\$13.68	\$39.83
Laborers (Class 05 - See notes)	5/1/2011		\$26.15	\$15.43	\$41.58
Millwright	7/1/2008		\$31.95	\$21.50	\$53.45
Millwright	7/1/2009		\$33.11	\$23.49	\$56.60
Millwright	7/1/2010		\$33.11	\$24.33	\$57.44
Operators (Building/Heavy, Class 01 - See Notes)	5/1/2009		\$29.42	\$16.89	\$46.31
Operators (Building/Heavy, Class 01 - See Notes)	5/1/2010		\$30.76	\$17.85	\$48.61
Operators (Building/Heavy, Class 01 - See Notes)	5/1/2011		\$32.06	\$18.85	\$50.91
Operators (Building/Heavy, Class 01a - See Notes)	5/1/2009		\$31.67	\$17.55	\$49.22
Operators (Building/Heavy, Class 01a - See Notes)	5/1/2010		\$33.01	\$18.51	\$51.52
Operators (Building/Heavy, Class 01a - See Notes)	5/1/2011		\$34.31	\$19.51	\$53.82
Operators (Building/Heavy, Class 02 - See Notes)	5/1/2009		\$29.13	\$16.81	\$45.94
Operators (Building/Heavy, Class 02 - See Notes)	5/1/2010		\$30.47	\$17.77	\$48.24
Operators (Building/Heavy, Class 02 - See Notes)	5/1/2011		\$31.77	\$18.77	\$50.54
Operators (Building/Heavy, Class 02a - See Notes)	5/1/2009		\$31.38	\$17.48	\$48.86
Operators (Building/Heavy, Class 02a - See Notes)	5/1/2010		\$32.72	\$18.44	\$51.16
Operators (Building/Heavy, Class 02a - See Notes)	5/1/2011		\$34.02	\$19.44	\$53.46
Operators (Building/Heavy, Class 03 - See Notes)	5/1/2009		\$26.22	\$15.94	\$42.16
Operators (Building/Heavy, Class 03 - See Notes)	5/1/2010		\$27.55	\$16.91	\$44.46
Operators (Building/Heavy, Class 03 - See Notes)	5/1/2011		\$28.85	\$17.91	\$46.76
Operators (Building/Heavy, Class 04 - See Notes)	5/1/2009		\$25.08	\$15.61	\$40.69
Operators (Building/Heavy, Class 04 - See Notes)	5/1/2010		\$26.42	\$16.57	\$42.99
Operators (Building/Heavy, Class 04 - See Notes)	5/1/2011		\$27.72	\$17.57	\$45.29
Operators (Building/Heavy, Class 05 - See Notes)	5/1/2009		\$24.64	\$15.47	\$40.11
Operators (Building/Heavy, Class 05 - See Notes)	5/1/2010		\$25.97	\$16.44	\$42.41

PREVAILING WAGES PROJECT RATES

Building	Effective Date	Expiration Date	Hourly Rate	Fringe Benefits	Total
Operators (Building/Heavy, Class 05 - See Notes)	5/1/2011		\$27.27	\$17.44	\$44.71
Operators (Building/Heavy, Class 06 - See Notes)	5/1/2009		\$23.76	\$15.21	\$38.97
Operators (Building/Heavy, Class 06 - See Notes)	5/1/2010		\$25.09	\$16.18	\$41.27
Operators (Building/Heavy, Class 06 - See Notes)	5/1/2011		\$26.39	\$17.18	\$43.57
Operators (Building/Heavy, Class 07/A - See Notes)	5/1/2009		\$35.30	\$19.38	\$54.68
Operators (Building/Heavy, Class 07/A - See Notes)	5/1/2010		\$36.91	\$20.43	\$57.34
Operators (Building/Heavy, Class 07/A - See Notes)	5/1/2011		\$38.47	\$21.53	\$60.00
Operators (Building/Heavy, Class 07/B - See Notes)	5/1/2009		\$34.96	\$19.27	\$54.23
Operators (Building/Heavy, Class 07/B - See Notes)	5/1/2010		\$36.56	\$20.33	\$56.89
Operators (Building/Heavy, Class 07/B - See Notes)	5/1/2011		\$38.12	\$21.43	\$59.55
Painters Class 1 (see notes)	5/1/2009		\$22.75	\$12.57	\$35.32
Painters Class 1 (see notes)	5/1/2010		\$23.30	\$13.42	\$36.72
Painters Class 1 (see notes)	5/1/2011		\$23.30	\$15.42	\$38.72
Painters Class 2 (see notes)	5/1/2009		\$24.75	\$12.57	\$37.32
Painters Class 2 (see notes)	5/1/2010		\$25.30	\$13.42	\$38.72
Painters Class 2 (see notes)	5/1/2011		\$25.30	\$15.42	\$40.72
Painters Class 3 (see notes)	5/1/2009		\$25.60	\$12.57	\$38.17
Painters Class 3 (see notes)	5/1/2010		\$29.60	\$13.42	\$43.02
Painters Class 3 (see notes)	5/1/2011		\$29.60	\$15.42	\$45.02
Plasterers	5/1/2009		\$26.43	\$15.51	\$41.94
Plasterers	5/1/2010		\$26.93	\$16.96	\$43.89
Plasterers	5/1/2011		\$25.68	\$20.16	\$45.84
Plumbers	5/1/2010		\$34.50	\$24.04	\$58.54
Roofers (Composition)	5/1/2009		\$30.00	\$23.10	\$53.10
Roofers (Composition)	5/1/2010		\$30.75	\$24.95	\$55.70
Roofers (Shingle, Slate, Tile)	5/1/2009		\$23.25	\$13.62	\$36.87
Sheet Metal Workers	6/1/2008		\$28.98	\$27.45	\$56.43
Sheet Metal Workers	6/1/2009		\$29.56	\$29.12	\$58.68
Sheet Metal Workers	6/1/2010		\$29.59	\$29.69	\$59.28

PREVAILING WAGES PROJECT RATES

Building	Effective Date	Expiration Date	Hourly Rate	Fringe Benefits	Total
Sheet Metal Workers	6/1/2011		\$29.59	\$30.44	\$60.03
Sheet Metal Workers	6/1/2012		\$29.59	\$31.44	\$61.03
Sign Makers and Hangars	7/1/2009		\$24.17	\$15.99	\$40.16
Sign Makers and Hangars	5/21/2010		\$24.33	\$16.37	\$40.70
Sprinklerfitters	7/1/2009		\$33.35	\$17.05	\$50.40
Sprinklerfitters	1/1/2010		\$33.85	\$17.60	\$51.45
Steamfitters	5/1/2009		\$37.76	\$25.00	\$62.76
Steamfitters	5/1/2010		\$39.36	\$26.26	\$65.62
Terrazzo Finisher	5/1/2009		\$26.54	\$14.37	\$40.91
Terrazzo Finisher	5/1/2010		\$27.89	\$14.42	\$42.31
Terrazzo Setter	5/1/2009		\$25.86	\$17.27	\$43.13
Terrazzo Setter	5/1/2010		\$27.21	\$17.32	\$44.53
Tile & Marble Finisher	5/1/2009		\$21.13	\$13.08	\$34.21
Tile & Marble Layer	5/1/2009		\$25.11	\$14.72	\$39.83
Tile & Marble Layer	5/1/2010		\$25.36	\$15.22	\$40.58
Tile & Marble Layer	5/1/2011		\$26.31	\$15.22	\$41.53
Truckdriver class 1(see notes)	5/1/2009		\$28.58	\$0.00	\$28.58
Truckdriver class 1(see notes)	5/1/2010		\$29.58	\$0.00	\$29.58
Truckdriver class 1(see notes)	5/1/2011		\$30.73	\$0.00	\$30.73
Truckdriver class 2 (see notes)	5/1/2009		\$28.65	\$0.00	\$28.65
Truckdriver class 2 (see notes)	5/1/2010		\$29.65	\$0.00	\$29.65
Truckdriver class 2 (see notes)	5/1/2011		\$30.80	\$0.00	\$30.80
Truckdriver class 3 (see notes)	5/1/2009		\$29.14	\$0.00	\$29.14
Truckdriver class 3 (see notes)	5/1/2010		\$30.14	\$0.00	\$30.14
Truckdriver class 3 (see notes)	5/1/2011		\$31.29	\$0.00	\$31.29

PREVAILING WAGES PROJECT RATES

Heavy/Highway	Effective Date	Expiration Date	Hourly Rate	Fringe Benefits	Total
Carpenter - Chief of Party (Surveying & Layout)	5/1/2009		\$34.09	\$19.67	\$53.76
Carpenter - Chief of Party (Surveying & Layout)	5/1/2010		\$36.67	\$19.67	\$56.34
Carpenter - Chief of Party (Surveying & Layout)	5/1/2011		\$39.37	\$19.67	\$59.04
Carpenter - Instrument Person (Surveying & Layout)	5/1/2009		\$30.99	\$19.67	\$50.66
Carpenter - Instrument Person (Surveying & Layout)	5/1/2010		\$33.34	\$19.67	\$53.01
Carpenter - Instrument Person (Surveying & Layout)	5/1/2011		\$35.79	\$19.67	\$55.46
Carpenter - Rodman (Surveying & Layout)	5/1/2009		\$22.31	\$19.67	\$41.98
Carpenter - Rodman (Surveying & Layout)	5/1/2010		\$24.00	\$19.67	\$43.67
Carpenter - Rodman (Surveying & Layout)	5/1/2011		\$25.77	\$19.67	\$45.44
Carpenters	5/1/2009		\$30.99	\$19.67	\$50.66
Carpenters	5/1/2010		\$33.34	\$19.67	\$53.01
Carpenters	5/1/2011		\$35.79	\$19.67	\$55.46
Laborers (Class 01 - See notes)	5/1/2009		\$16.22	\$11.03	\$27.25
Laborers (Class 01 - See notes)	5/1/2010		\$16.77	\$11.88	\$28.65
Laborers (Class 01 - See notes)	5/1/2011		\$17.32	\$12.78	\$30.10
Laborers (Class 02 - See notes)	5/1/2009		\$22.84	\$11.03	\$33.87
Laborers (Class 02 - See notes)	5/1/2010		\$23.39	\$11.88	\$35.27
Laborers (Class 02 - See notes)	5/1/2011		\$23.94	\$12.78	\$36.72
Laborers (Class 03 - See notes)	5/1/2009		\$19.83	\$11.03	\$30.86
Laborers (Class 03 - See notes)	5/1/2010		\$20.38	\$11.88	\$32.26
Laborers (Class 03 - See notes)	5/1/2011		\$20.93	\$12.78	\$33.71
Laborers (Class 04 - See notes)	5/1/2009		\$20.18	\$11.03	\$31.21
Laborers (Class 04 - See notes)	5/1/2010		\$20.73	\$11.88	\$32.61
Laborers (Class 04 - See notes)	5/1/2011		\$21.28	\$12.78	\$34.06
Laborers (Class 05 - See notes)	5/1/2009		\$20.85	\$11.03	\$31.88
Laborers (Class 05 - See notes)	5/1/2010		\$21.40	\$11.88	\$33.28
Laborers (Class 05 - See notes)	5/1/2011		\$21.95	\$12.78	\$34.73
Laborers (Class 06 - See notes)	5/1/2009		\$20.27	\$11.03	\$31.30
Laborers (Class 06 - See notes)	5/1/2010		\$20.82	\$11.88	\$32.70
Laborers (Class 06 - See notes)	5/1/2011		\$21.37	\$12.78	\$34.15

PREVAILING WAGES PROJECT RATES

Heavy/Highway	Effective Date	Expiration Date	Hourly Rate	Fringe Benefits	Total
Laborers (Class 07 - See notes)	5/1/2009		\$20.56	\$11.03	\$31.59
Laborers (Class 07 - See notes)	5/1/2010		\$21.11	\$11.88	\$32.99
Laborers (Class 07 - See notes)	5/1/2011		\$21.66	\$12.78	\$34.44
Laborers (Class 08 - See notes)	5/1/2009		\$21.04	\$11.03	\$32.07
Laborers (Class 08 - See notes)	5/1/2010		\$21.59	\$11.88	\$33.47
Laborers (Class 08 - See notes)	5/1/2011		\$22.14	\$12.78	\$34.92
Operators (Highway, Class 01 - See Notes)	5/1/2009		\$27.45	\$16.30	\$43.75
Operators (Highway, Class 01 - See Notes)	5/1/2010		\$28.79	\$17.26	\$46.05
Operators (Highway, Class 01 - See Notes)	5/1/2011		\$30.09	\$18.26	\$48.35
Operators (Highway, Class 01a - See Notes)	5/1/2009		\$29.70	\$16.98	\$46.68
Operators (Highway, Class 01a - See Notes)	5/1/2010		\$31.04	\$17.94	\$48.98
Operators (Highway, Class 01a - See Notes)	5/1/2011		\$32.34	\$18.94	\$51.28
Operators (Highway, Class 02 - See Notes)	5/1/2009		\$26.27	\$15.96	\$42.23
Operators (Highway, Class 02 - See Notes)	5/1/2010		\$27.61	\$16.92	\$44.53
Operators (Highway, Class 02 - See Notes)	5/1/2011		\$28.91	\$17.92	\$46.83
Operators (Highway, Class 03 - See Notes)	5/1/2009		\$25.58	\$15.75	\$41.33
Operators (Highway, Class 03 - See Notes)	5/1/2010		\$26.91	\$16.72	\$43.63
Operators (Highway, Class 03 - See Notes)	5/1/2011		\$28.21	\$17.72	\$45.93
Operators (Highway, Class 04 - See Notes)	5/1/2009		\$25.13	\$15.62	\$40.75
Operators (Highway, Class 04 - See Notes)	5/1/2010		\$26.46	\$16.59	\$43.05
Operators (Highway, Class 04 - See Notes)	5/1/2011		\$27.76	\$17.59	\$45.35
Operators (Highway, Class 05 - See Notes)	5/1/2009		\$24.62	\$15.47	\$40.09
Operators (Highway, Class 05 - See Notes)	5/1/2010		\$25.95	\$16.44	\$42.39
Operators (Highway, Class 05 - See Notes)	5/1/2011		\$27.25	\$17.44	\$44.69
Operators (Highway, Class 06 - See Notes)	5/1/2009		\$27.69	\$16.36	\$44.05
Operators (Highway, Class 06 - See Notes)	5/1/2010		\$29.03	\$17.32	\$46.35
Operators (Highway, Class 06 - See Notes)	5/1/2011		\$30.33	\$18.32	\$48.65


PREVAILING WAGES PROJECT RATES

Heavy/Highway	Effective Date	Expiration Date	Hourly Rate	Fringe Benefits	Total
Operators (Highway, Class 06/A - See Notes)	5/1/2009		\$29.94	\$17.02	\$46.96
Operators (Highway, Class 06/A - See Notes)	5/1/2010		\$31.28	\$17.98	\$49.26
Operators (Highway, Class 06/A - See Notes)	5/1/2011		\$32.58	\$18.98	\$51.56
Operators (Highway, Class 07/A - See Notes)	5/1/2009		\$32.94	\$18.67	\$51.61
Operators (Highway, Class 07/A - See Notes)	5/1/2010		\$34.55	\$19.72	\$54.27
Operators (Highway, Class 07/A - See Notes)	5/1/2011		\$36.10	\$20.83	\$56.93
Operators (Highway, Class 07/B - See Notes)	5/1/2009		\$31.53	\$18.25	\$49.78
Operators (Highway, Class 07/B - See Notes)	5/1/2010		\$33.13	\$19.31	\$52.44
Operators (Highway, Class 07/B - See Notes)	5/1/2011		\$34.69	\$20.41	\$55.10
Steamfitters (Heavy and Highway - Gas Distribution)	5/1/2010		\$30.27	\$26.09	\$56.36
Truckdriver class 1(see notes)	5/1/2009		\$28.58	\$0.00	\$28.58
Truckdriver class 1(see notes)	5/1/2010		\$29.58	\$0.00	\$29.58
Truckdriver class 1(see notes)	5/1/2011		\$30.73	\$0.00	\$30.73
Truckdriver class 2 (see notes)	5/1/2009		\$28.65	\$0.00	\$28.65
Truckdriver class 2 (see notes)	5/1/2010		\$29.65	\$0.00	\$29.65
Truckdriver class 2 (see notes)	5/1/2011		\$30.80	\$0.00	\$30.80
Truckdriver class 3 (see notes)	5/1/2009		\$29.14	\$0.00	\$29.14
Truckdriver class 3 (see notes)	5/1/2010		\$30.14	\$0.00	\$30.14
Truckdriver class 3 (see notes)	5/1/2011		\$31.29	\$0.00	\$31.29

WEEKLY PAYROLL CERTIFICATION FOR PUBLIC WORKS PROJECTS

☐ Contractor or
 ☐ Subcontractor (Please check one)

ALL INFORMATION MUST BE COMPLETED

CONTRACTOR ADDRESS			SUBCONTRACTOR ADDRESS			 DEPARTMENT OF LABOR & INDUSTRY <small>COMMONWEALTH OF PENNSYLVANIA</small> BUREAU OF LABOR LAW COMPLIANCE PREVAILING WAGE DIVISION 7TH & FORSTER STREETS HARRISBURG, PA 17120 1-800-932-0665		
PAYROLL NUMBER	WEEK ENDING DATE	PROJECT AND LOCATION PROJECT SERIAL #						

EMPLOYEE NAME	APPR. RATE (%)	WORK CLASSIFICATION	DAY AND DATE							S- TIME 0- TIME	BASE HOURLY RATE	TOTAL FRINGE BENEFITS (C=Cash) (FB=Contributions)*	TOTAL DEDUCTIONS	GROSS PAY FOR PREVAILING RATE JOB(S)	CHECK #
			HOURS WORKED EACH DAY												
											C:				
											FB:				
											C:				
											FB:				
											C:				
											FB:				
											C:				
											FB:				
											C:				
											FB:				

*SEE REVERSE SIDE

PAGE NUMBER _____ OF _____

THE NOTARIZATION MUST BE COMPLETED ON FIRST AND LAST SUBMISSIONS ONLY. ALL OTHER INFORMATION MUST BE COMPLETED WEEKLY.

*FRINGE BENEFITS EXPLANATION (FB): Bona fide benefits contribution, except those required by Federal or State Law (unemployment tax, workers' compensation, income taxes, etc.)

Please specify the type of benefits provided and contributions per hour:

- 1) Medical or hospital care _____
- 2) Pension or retirement _____
- 3) Life insurance _____
- 4) Disability _____
- 5) Vacation, holiday _____
- 6) Other (please specify) _____

CERTIFIED STATEMENT OF COMPLIANCE

1. The undersigned, having executed a contract with _____
(AWARDING AGENCY, CONTRACTOR OR SUBCONTRACTOR)
_____ for the construction of the above-identified project, acknowledges that:
 - (a) The prevailing wage requirements and the predetermined rates are included in the aforesaid contract.
 - (b) Correction of any infractions of the aforesaid conditions is the contractor's or subcontractor's responsibility.
 - (c) It is the contractor's responsibility to include the Prevailing Wage requirements and the predetermined rates in any subcontract or lower tier subcontract for this project.
2. The undersigned certifies that:
 - (a) Neither he nor his firm, nor any firm, corporation or partnership in which he or his firm has an interest is debarred by the Secretary of Labor and Industry pursuant to Section 11(e) of the PA Prevailing Wage Act, Act of August 15, 1961, P.L. 987 as amended, 43 P.S. § 165-11(e).
 - (b) No part of this contract has been or will be subcontracted to any subcontractor if such subcontractor or any firm, corporation or partnership in which such subcontractor has an interest is debarred pursuant to the aforementioned statute.
3. The undersigned certifies that:
 - (a) the legal name and the business address of the contractor or subcontractor are: _____

 - (b) The undersigned is: ☐ a single proprietorship ☐ a corporation organized in the state of _____
☐ a partnership ☐ other organization (describe) _____
 - (c) The name, title and address of the owner, partners or officers of the contractor/subcontractor are:

NAME	TITLE	ADDRESS

The willful falsification of any of the above statements may subject the contractor to civil or criminal prosecution, provided in the PA Prevailing Wage Act of August 15, 1961, P.L. 987, as amended, August 9, 1963, 43 P.S. § 165.1 through 165.17.

(DATE)

(SIGNATURE)

(TITLE)

SEAL

Taken, sworn and subscribed before me this _____ Day
of _____ A.D., _____



Pennsylvania Department of Environmental Protection

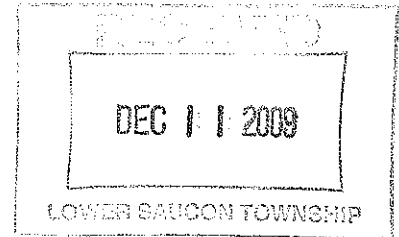
2 Public Square
Wilkes-Barre, PA 18711-0790
December 9, 2009

Northeast Regional Office

570-826-2511
Fax 570-830-3016

CERTIFIED MAIL NO. 7008 3230 0002 4876 5571

Mr. Jack Cahalan
Township Manager
Lower Saucon Township
3700 Old Philadelphia Pike
Bethlehem, PA 18015



Re: Water Obstruction & Encroachment Permit
DEP Application No. E48-403
APS No. 685371
Pedestrian Bridge
Lower Saucon Township, Northampton County

Dear Mr. Cahalan:

Enclosed are duplicate copies of your Water Obstruction and Encroachment Permit. Also enclosed is your Pennsylvania State Programmatic General Permit (PASPGP), providing federal authorization. Please review both permits so that you are aware of the extent of authorization and conditions. **PLEASE SIGN BOTH COPIES OF THE WATER OBSTRUCTION & ENCROACHMENT PERMIT, RETURN THE FILE COPY TO THIS OFFICE WITHIN 15 DAYS AND KEEP THE OTHER COPY FOR YOUR RECORDS.** A self-addressed envelope is enclosed for your convenience. Please note that you do not have authorization to begin your project until DEP receives your signed copy of the Water Obstruction & Encroachment Permit. **IF YOU BEGIN WORK PRIOR TO DEP RECEIVING THE SIGNED COPY OF THE PERMIT, YOU ARE SUBJECT TO PENALTIES TOTALING UP TO \$10,000 PER DAY.** The Department will provide you with an acknowledgment letter upon receipt of the fully-signed permit.

Prior to the commencement of construction, the enclosed Acknowledgment of Appraisal of Permit Conditions must be completed and signed by you and an individual responsible for the supervision or conduct of the construction work, acknowledging and accepting the general and special conditions contained in the permit. Unless the signed Acknowledgment of Appraisal of Permit Conditions is submitted to this office, the permit is void. ⁽²⁾

Any person aggrieved by this action may appeal, pursuant to Section 4 of the Environmental Hearing Board Act, 35 P.S. Section 7514, and the Administrative Agency Law, 2 Pa.C.S. Chapter 5A, to the Environmental Hearing Board, Second Floor, Rachel Carson State Office Building, 400 Market Street, P.O. Box 8457, Harrisburg, PA 17105-8457, 717-787-3483. TDD users may contact the Board through the Pennsylvania Relay Service, 800-654-5984. Appeals must be filed with the Environmental Hearing Board within 30 days of receipt of written notice of this action unless the appropriate statute provides a different time period. Copies of the appeal form and the Board's rules of practice and procedure may be obtained from the Board. The appeal form and the Board's rules of practice and

procedure are also available in Braille or on audiotape from the Secretary to the Board at 717-787-3483. This paragraph does not, in and of itself, create any right of appeal beyond that permitted by applicable statutes and decisional law.

IF YOU WANT TO CHALLENGE THIS ACTION, YOUR APPEAL MUST REACH THE BOARD WITHIN 30 DAYS. YOU DO NOT NEED A LAWYER TO FILE AN APPEAL WITH THE BOARD.

IMPORTANT LEGAL RIGHTS ARE AT STAKE, HOWEVER, SO YOU SHOULD SHOW THIS DOCUMENT TO A LAWYER AT ONCE. IF YOU CANNOT AFFORD A LAWYER, YOU MAY QUALIFY FOR FREE PRO BONO REPRESENTATION. CALL THE SECRETARY TO THE BOARD (717-787-3483) FOR MORE INFORMATION.

Should you have any questions about this permit, please contact Michael Luciani, Project Manager, Watershed Management Program, at the above telephone number.

Sincerely,

A handwritten signature in black ink, appearing to read "J. Buczynski", with a large, stylized flourish above the name.

Joseph J. Buczynski, P.E.
Environmental Program Manager
Watershed Management Program

Enclosures

cc: Hanover Engineering Associates, Inc.

Now

Commonwealth of Pennsylvania
Department of Environmental Protection
Watershed Management Program
Northeast Regional Office

**WATER OBSTRUCTION AND ENCROACHMENT PERMIT
SMALL PROJECT PURSUANT TO SECTION 105.13(e)**

The Department of Environmental Protection "Department", established by the Act of December 3, 1970, P.L. 834 (71 P.S. §§510-1 et seq.) and empowered to exercise certain powers and perform certain duties under and by virtue of the Act of November 26, 1978, P.L. 1375, as amended by the Act of October 23, 1979, P.L. 204 (32 P.S. §§693.1 et seq.) known as the "Dam Safety and Encroachments Act"; Act of October 4, 1978, P.L. 851, (32 P.S. §§679.101 et seq.) known as the "Flood Plain Management Act"; Act of June 22, 1937, P.L. 1987, (35 P.S. §§691.1 et seq.), known as the "Clean Streams Law"; and the Administrative Code, Act of April 9, 1929, P.L. 177, as amended, which empowers the Department to exercise certain powers and perform certain duties by law vested in and imposed upon the Water Supply Commission of Pennsylvania and the Water and Power Resources Board, hereby issues this permit to:

**Lower Saucon Township
3700 Old Philadelphia Pike, Bethlehem, PA 18015**

giving its consent to:

construct and maintain an 8-foot wide single span pedestrian bridge across Polk Valley Run having a span of approximately 12 feet and an underclearance of approximately 4 feet. The project is located approximately 2.1 miles southeast from the intersection of Interstate 78 and State Route 0412 on the south side of Polk Valley Road (Hellertown, PA Quadrangle Latitude: 40°34'04"; Longitude: -75°19'45") in Lower Saucon Township, Northampton County.

The issuance of this permit also constitutes approval of a Water Quality Certification under Section 401 of the Federal Water Pollution Control Act [33 U.S.C.A. 1341(a)].

If this work is not completed on or before the **31st** day of **December** A.D. **2012**, this permit, if not previously revoked or specifically extended by the Department in writing, shall become void without further notification.


This permit is issued in response to an application filed with the Department of Environmental Protection on the **4th** day of **February** A.D. **2009**, and with the understanding that the work shall be performed in accordance with the maps, plans, profiles and specifications filed with and made a part of the application on **March 13, 2009**, subject, however, to the provisions of the Dam Safety and Encroachments Act, the Flood Plain Management Act, the Clean Streams Law, the Administrative Code, the rules and regulations promulgated thereunder and the following conditions and restrictions:

1. The permittee shall sign the permit thereby expressly certifying the permittee's acceptance of, and agreement to comply with, the terms and conditions of the permit. The permittee shall return a signed copy of the permit to the Department. The permit will not be effective and the work herein authorized may not commence until the signed copy of the permit is received by the Department.
2. The Department, in issuing this permit, has relied on the information and data which the permittee has provided in connection with his permit application. If, subsequent to the issuance of this permit, such information and data prove to be false, incomplete or inaccurate, this permit may be modified, suspended, or revoked, in whole or in part, and the Department may, in addition, institute appropriate legal proceedings.
3. This permit does not give any property rights, either in real estate or material, nor any exclusive privileges, nor shall it be construed to grant or confer any right, title, easement, or interest in, to, or over any land belonging to the Commonwealth of Pennsylvania; neither does it authorize any injury to private property or invasion of private rights, nor any infringement of Federal, State, or Local laws or regulations; nor does it obviate the necessity of obtaining Federal assent when necessary.
4. The work shall at all times be subject to supervision and inspection by representatives of the Department, and no changes in the maps, plans, profiles, and specifications as approved shall be made except with the written consent of the Department. The Department, however, reserves the right to require such changes or modifications in the maps, plans, profiles, and specifications as may be considered necessary. The Department further reserves the right to suspend or revoke this permit if in its opinion the best interest of the Commonwealth will be subserved thereby.
5. This permit authorizes the construction, operation, maintenance and normal repair of the permitted structures conducted within the original specifications for the water obstruction or encroachment, and in accordance with the regulations of the Department and terms and conditions of this permit. Any repairs or maintenance involving modifications of the water obstruction or encroachment from its original specifications, and any repairs or reconstruction involving a substantial portion of the structure as defined by regulations of the Department shall require the prior written approval and permit of the Department.
6. Waste materials, scrap, or excess construction materials may not be disposed of in any watercourse, floodway or body of water but shall be collected, stored, and disposed of in accordance with the Solid Waste Management Act (35 P.S. §§6018.101-6018.1003), the Municipal Waste, Planning, Recycling and Waste Reduction Act (53 P.S. §§4000.101-4000.1904), the Clean Streams Law (35 P.S. §§691.1-691.1001) and related rules and regulations.
7. There shall be no unreasonable interference with the free discharge of the river or stream or navigation during construction.

8. If, in the future, the Department determines that the water obstruction or encroachment causes unreasonable obstruction to the free passage of floodwaters or navigation, the permittee shall, upon due notice remove or alter the structural work or obstructions caused thereby, without expense to the Commonwealth of Pennsylvania, so as to increase the flood carrying capacity of the channel or render navigation reasonably free, easy, and unobstructed, in such manner as the Department may require. No claim shall be made against the Commonwealth of Pennsylvania on account of any such removal or alteration.
9. The permittee shall notify the Department, in writing, of the proposed time for commencement of work at least 15 days prior to the commencement of construction.
10. If construction work has not been completed within the time specified in the permit and the time limit specified in the permit has not been extended in writing by the Department or if a permit has been revoked for any reason, the permittee shall, at his own expense and in a manner that the Department may prescribe, remove all or any portion of the work as the Department requires and restore the watercourse and floodplain to their former condition.
11. The permittee shall fully inform the engineer or contractor, responsible for the supervision and conduct of work, of the terms, conditions, restrictions and covenants of this permit. Prior to the commencement of construction, the permittee shall file with the Department in writing, on a form provided by the Department, a statement signed by the permittee and an individual responsible for the supervision or conduct of the construction work acknowledging and accepting the general and special conditions contained in the permit. Unless the acknowledgment and acceptance have been filed, the permit is void. A copy of the permit and the acknowledgment shall be available at the work site for inspection upon request by an officer or agent of the Department or another Federal, State, County or Municipal Agency.
12. The permittee shall operate and maintain the structure or work authorized herein in a safe condition in accordance with the permit terms and conditions and the approved maps, plans, profiles and specifications.
13. This permit may not be transferred without prior written approval from the Department, such approval being considered upon receipt of the properly executed "Application for Transfer of Permit" form.
14. If and when the permittee desires to discontinue use or abandon the activity authorized herein, he must remove all or part of the structure or work authorized and take other actions as are necessary to protect safety and the environment in accordance with a permit issued by the Department.
15. If the use of explosives in any waterways is required, the permittee shall secure the prior written permit from the Pennsylvania Fish and Boat Commission, pursuant to the Pennsylvania Fish and Boat Code, Act 1980-175 Title 30 Pennsylvania Consolidated Statutes, Section 2906. Requests should be directed to the Pennsylvania Fish and Boat Commission, Bureau of Administration, P.O. Box 67000, Harrisburg, PA 17106-7000, Telephone 717-657-4522.

16. Permittee shall implement and monitor the Erosion and Sedimentation Control Plan prepared in accordance with Chapter 102 so as to minimize erosion and prevent excessive sedimentation into the receiving watercourse or body of water.
17. The project site shall at all times be available for inspection by authorized officers and employees of the Pennsylvania Fish and Boat Commission. Prior to commencement and upon completion of the work authorized by this permit, the permittee shall notify the Pennsylvania Fish and Boat Commission's Southeast Regional Office, P. O. Box 9, Elm, PA 17521, Telephone 717-626-0228.
18. The project site shall at all times be available for inspection by authorized officers and employees of the County Conservation District. Prior to commencement and upon completion of the work authorized by this permit, the permittee shall notify the Northampton County Conservation District, R.R. 4, Nazareth, PA 18064, Telephone 610-746-1971.
19. SPECIAL CONDITIONS:
 - A. Polk Valley Run is classified as a high quality, cold water fishery; therefore, construction shall take place during normal low flow.
 - B. Since this stream is a wild trout stream, no work shall be done in the stream channel between October 1 and December 31 without the prior written approval of the Pennsylvania Fish and Boat Commission.

Permittee hereby accepts and agrees to comply with the terms and conditions of this permit.

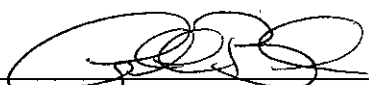


Permittee (signature) *TOWNSHIP HAZEN*

12-17-09

Date

DEPARTMENT OF ENVIRONMENTAL PROTECTION



Joseph J. Buczynski, P.E.
Environmental Program Manager

12/9/09

Issue Date

HYDROLOGIC AND HYDRAULIC NARRATIVE REPORT

POLK VALLEY PARK PEDESTRIAN BRIDGE

LOWER SAUCON TOWNSHIP, NORTHAMPTON COUNTY

PENNSYLVANIA

NOVEMBER 17, 2008



Prepared by:

Hanover
Engineering Associates Inc

252 Brodhead Road, Suite 100
Bethlehem, PA 18017-8944
610.691.5644 • Fax 610.691.6968

Hanover Project LS07-41

TABLE OF CONTENTS

	<u>PAGE</u>
Purpose of Study.....	1
Site Conditions.....	1
Hydrologic Analysis.....	1
Hydraulic Analysis.....	2
A. Existing Conditions.....	2
B. Proposed Conditions.....	2
Analysis of Results and Conclusions.....	3

APPENDIX

- A. Site Map
- B. Wetlands Delineation
- C. Hydrologic Analysis – USGS PA Stream Stats
- D. Existing Conditions Hydraulic Analysis – HEC-RAS
- E. Proposed Conditions Hydraulic Analysis – HEC-RAS
- F. Soils Mapping (NRCS)

1. Purpose

The purpose of this project is to construct a bridge across Polk Valley Run to be part of a connection between Polk Valley Park and Saucon Valley High School in Lower Saucon Township, Northampton County.

This analysis has been developed to demonstrate through hydrologic and hydraulic analyses that the proposed improvements will not have an adverse effect on neighboring properties in this area.

2. Site Conditions

The bridge is proposed over Polk Valley Run approximately 1,500 feet upstream (southeast) of the border between Lower Saucon Township and the Borough of Hellertown. The bridge is approximately 70 feet upstream (east) of the existing Polk Valley Road box culvert and approximately 10 feet downstream (west) of an abandoned road embankment, which was associated with the former location of Polk Valley Road. The watercourse flows in a northwesterly direction. The Site Map is located in Appendix A of the report.

On the southeast side of Polk Valley Road, the land use surrounding the Polk Valley Run is residential, with the exception of the Polk Valley Park for which the bridge is proposed. The Saucon Valley School District owns the land on the northwest side of Polk Valley Road.

The Chapter 93 stream designation for Polk Valley Run (Unnamed Tributary to Saucon Creek between Black River and State Route 412) is Cold Water Fishes (CWF).

The existing stream is proposed to be crossed by a pedestrian bridge with a span of 30 feet, a width of 7 feet, with a bottom located approximately 4 feet above the streambed. All earthwork (the abutments and minimal grading for the approach to the bridge) will be completed outside of the wetlands and ordinary high water mark, as delineated by the September 6, 2007 assessment provided in Appendix B (sketch boundaries shown in the September 6, 2007 report were flagged, and subsequently refined by field survey). No work is proposed within the bed and banks of the stream; the simply-supported bridge will be delivered to the site preconstructed, ready for placement on the abutments. No realignment of the stream or flow is proposed.

3. Hydrologic Analysis

For the purpose of this analysis, the effects of the 100-year flow will be evaluated. No floodplain has been delineated in this area by the Federal Emergency Management Agency (FEMA).

The USGS PA Stream Stats Program was used to determine a peak flow of 535 cfs for the proposed crossing during the 100-year storm. Data calculated through the Stream Stats Program can be found in Appendix C. A FEMA delineated 100-year floodplain does not exist for the project area. Additionally, the contributory area was conservatively assumed to produce a 100% release, thereby producing the highest peak flows.

4. Hydraulic Analysis

The HEC-RAS River Analysis System, Version 4.0.0 of March 2008 and developed by the United States Army Corps of Engineers was used to analyze the hydraulic effects on the 100-year flow in Polk Valley Run as a result of the proposed bridge (between Station 2+07 and Station 2+14). The calculated flow of 535 cfs was used for this analysis. Analysis at the property boundary at Stream Station 2+20, which is the first cross section upstream of the proposed culvert, will illustrate the maximum effect that the bridge will have on the contributory 100-year flow.

Existing Conditions

The stream channel at and near the bridge is a mix of soil, sand, gravel, and a few larger rocks; this report uses a conservative Manning's coefficient of 0.035 when analyzing this area. The stream banks are vegetated with grass, brush, and a few trees, the majority of and most significant of which are located near the banks of the stream; this report uses a conservative Manning's coefficient of 0.1 when analyzing this area.

Cross sections were developed from field topography data obtained by Hanover Engineering Associates, Inc. at 50-foot intervals. All of the topography data located more than 15 feet from the bridge was obtained for use in the approved analysis "Alternate Stormwater Management Report for Polk Valley Park" dated August 10, 2004. All of that survey data is included in this analysis, however, much of it is omitted from the printed report as it is far more topography than is necessary to show the effects of the proposed bridge. Cross sections near the proposed bridge location were determined by field survey during the summer of 2008. Detailed results of the analysis for the predevelopment conditions can be found in Appendix D.

The predevelopment analysis produced a water elevation of 355.25 at the property boundary Station 2+20, just upstream of the proposed bridge location; at Station 2+14, the location of the upstream end of the proposed bridge, the predevelopment analysis produced a water elevation of 354.88.

Proposed Conditions

The proposed conditions are the same as the existing conditions (groundcover and topography), with the exception of minimal changes in topography near the proposed bridge.

The bridge elevation was chosen so that the bottom of the bridge would be located above the 100-year flood depth; the only impacts to the floodplain are caused by the grading for the pedestrian ramps leading to the bridge abutments.

Detailed results of the analysis for the postdevelopment conditions can be found in Appendix E.

The water elevation at Station 2+20, just upstream of the proposed bridge location, did not change from the existing condition, remaining at Elevation 355.25 during the proposed

conditions. At Station 2+14, the location of the upstream end of the proposed bridge, the postdevelopment analysis produced a water elevation of 354.97, for an increase of 0.09 foot over the predevelopment conditions.

5. Analysis of Results/Conclusions

The existing abandoned road embankment, directly upstream of the proposed bridge, is a more significant impediment to flood flow than is the proposed bridge. The proposed bridge will have no effect on the 100-year flow elevation on adjoining upstream properties. For the first few feet upstream of the proposed bridge, the 100-year flow elevation will increase by less than 0.1 foot, which can be neglected as it is within the HEC RAS program margin of error, per guidance received by the reviewing agency (The Pennsylvania Department of Environmental Protection Northeast Regional Office).

It is, therefore, our opinion that the proposed pedestrian bridge crossing of Polk Valley Run will neither create any adverse backwater conditions in the vicinity of the Polk Valley Run, nor are any adverse impacts to health and safety of neighboring properties anticipated.

APPENDIX A

SITE MAP

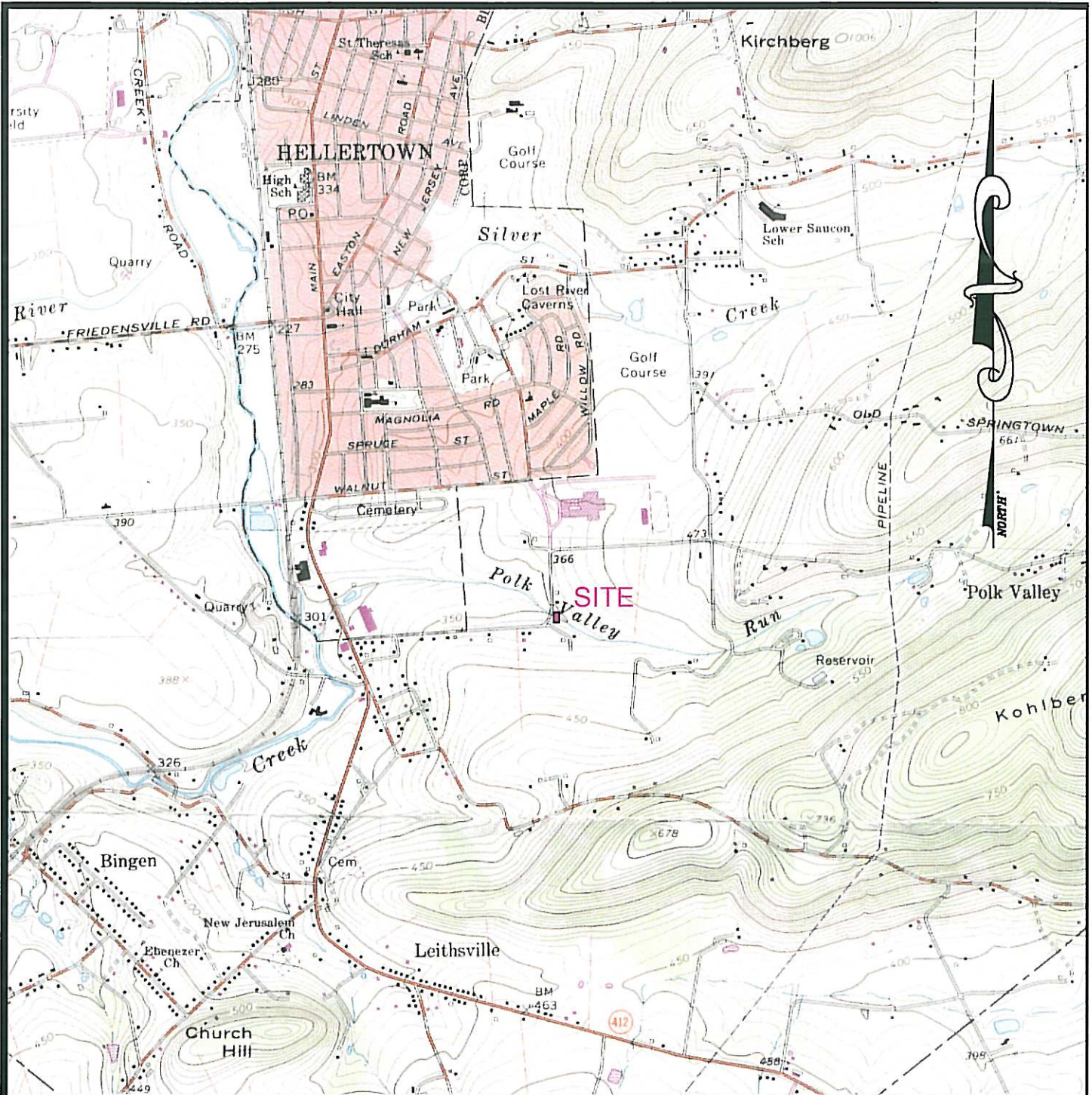


FIGURE 1 - LOCATION MAP

SCALE: APPROX. 1" = 2,000'

U.S.G.S. MAP, HELLERTOWN QUADRANGLE

POLK VALLEY PARK WALKWAY BRIDGE		PROJECT NO.
LOWER SAUCON TOWNSHIP NORTHAMPTON COUNTY PENNSYLVANIA		LS07-41
		1a03-09bphase1.dwg
		SHEET NO.
		1 OF 3
HANDOVER ENGINEERING ASSOCIATES, INC.		PREPARED BY
		DDM
		CHECKED BY
		N01
		DATE
		12-08-2008
		SCALE
		AS NOTED
252 BRODHEAD ROAD, SUITE 100 BETHLEHEM, PA. 18017-8937		