

The PennEast Pipeline Project



About the PennEast Pipeline Project

- AGL Resources; NJR Pipeline Company; PSEG Power; South Jersey Industries; Spectra Energy and UGI Energy Services (UGIES) comprise PennEast Pipeline Company, LLC.
- Over \$1 billion investment
- 114-mile, 36-inch pipeline from PA to NJ
- Deliver approximately 1 Bcf of gas per day
 - Enough gas to serve the equivalent of 4.7 million homes
- Estimated consumer energy savings ~\$900MM per year
- Will create approximately 2,600 jobs during construction

The proposed PennEast Pipeline project will bring low-cost natural gas to energy consumers in PA and NJ.

Project Timeline

- ✓ Property owners contacted
- ✓ FERC Pre-filing application submitted (October)
- ✓ Open Houses

2014

- ✓ Formal application for PennEast Pipeline filed with FERC and various other federal and state agencies (July)

2015

- ✓ FERC issues final decision (December)

2016

- ✓ Pending approvals, construction begins and is completed, providing local, affordable natural gas to area customers

2017



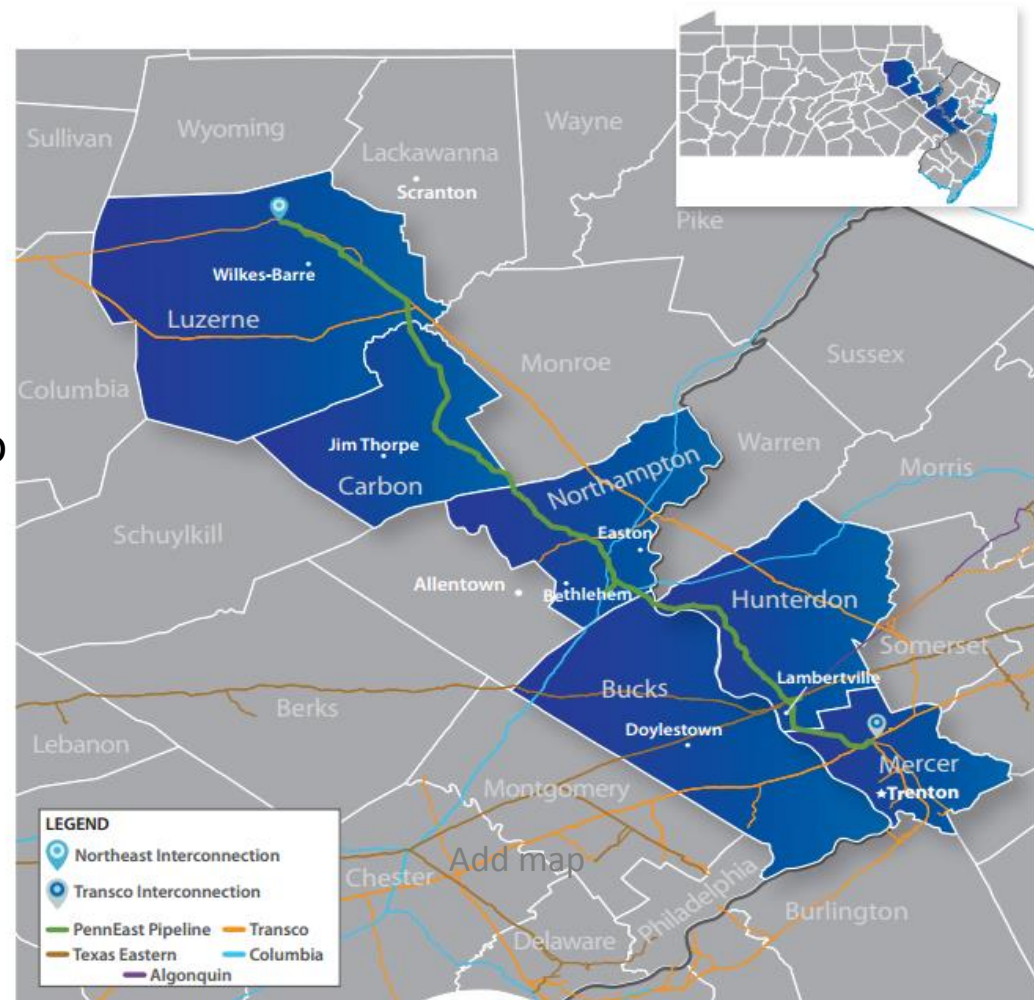
Federal Energy Regulatory Commission (FERC)

Interstate natural gas pipelines are regulated and authorized by FERC

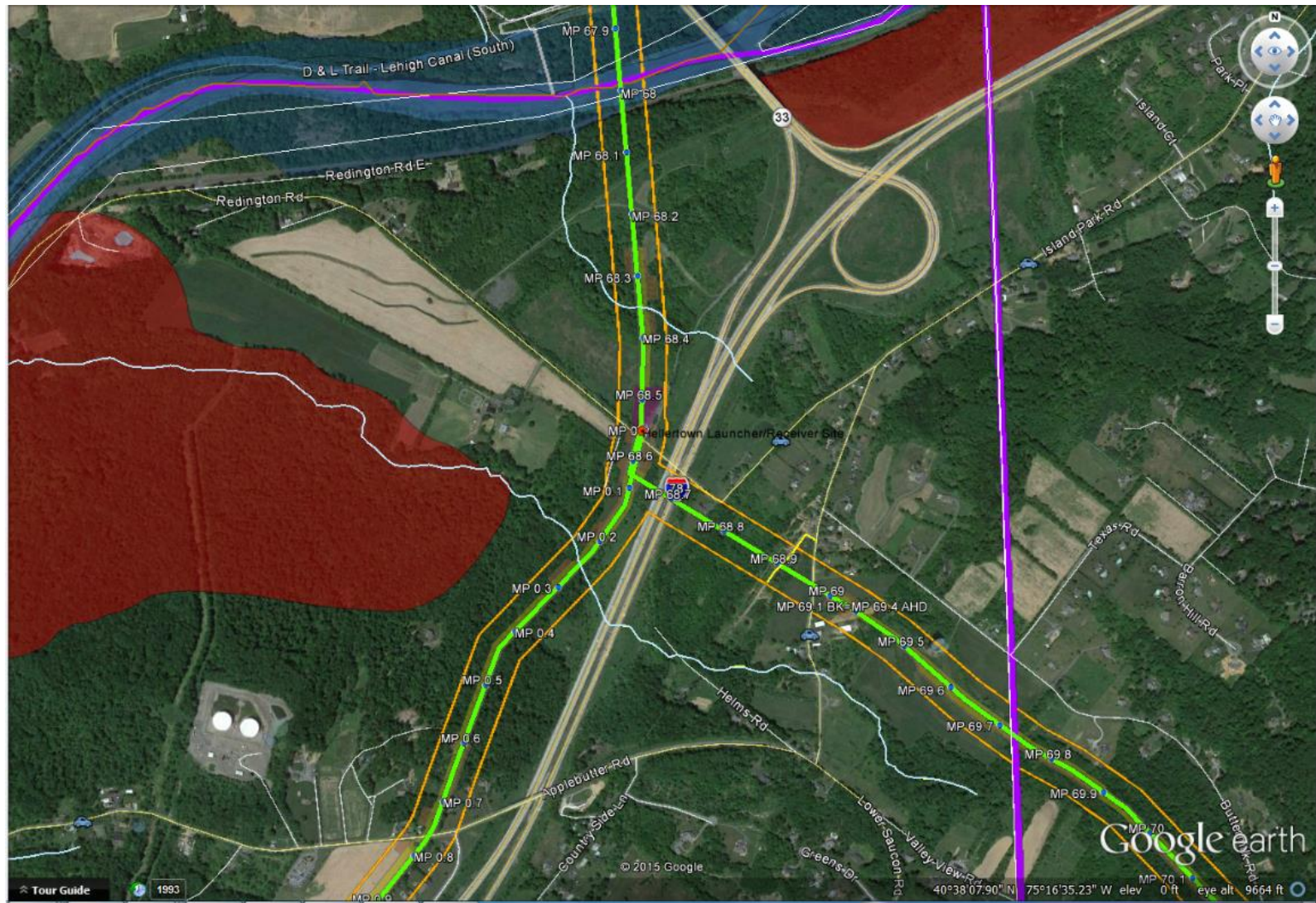
- **Pre-filing** – Gives landowners, officials and others time to review a project before a Certificate Application is filed
- **Open Houses** – Hosted by PennEast to provide opportunity for landowners and other stakeholders to learn about the project, talk one-on-one with project experts, ask questions and voice support or concern (November 2014)
- **Public Scoping Meetings** – Hosted by FERC to provide community additional opportunity for input on Environmental Impact Statement (EIS) (February 2015)
 - **Resource Reports submitted**
- **Certificate Application Filing** – The formal project application with FERC (est. July 2015)
 - **Analyzes data and prepares Draft EIS**
 - **Submit permit applications for other federal, state and local agencies**
 - **Additional public input opportunities**

Preferred Alternative Route

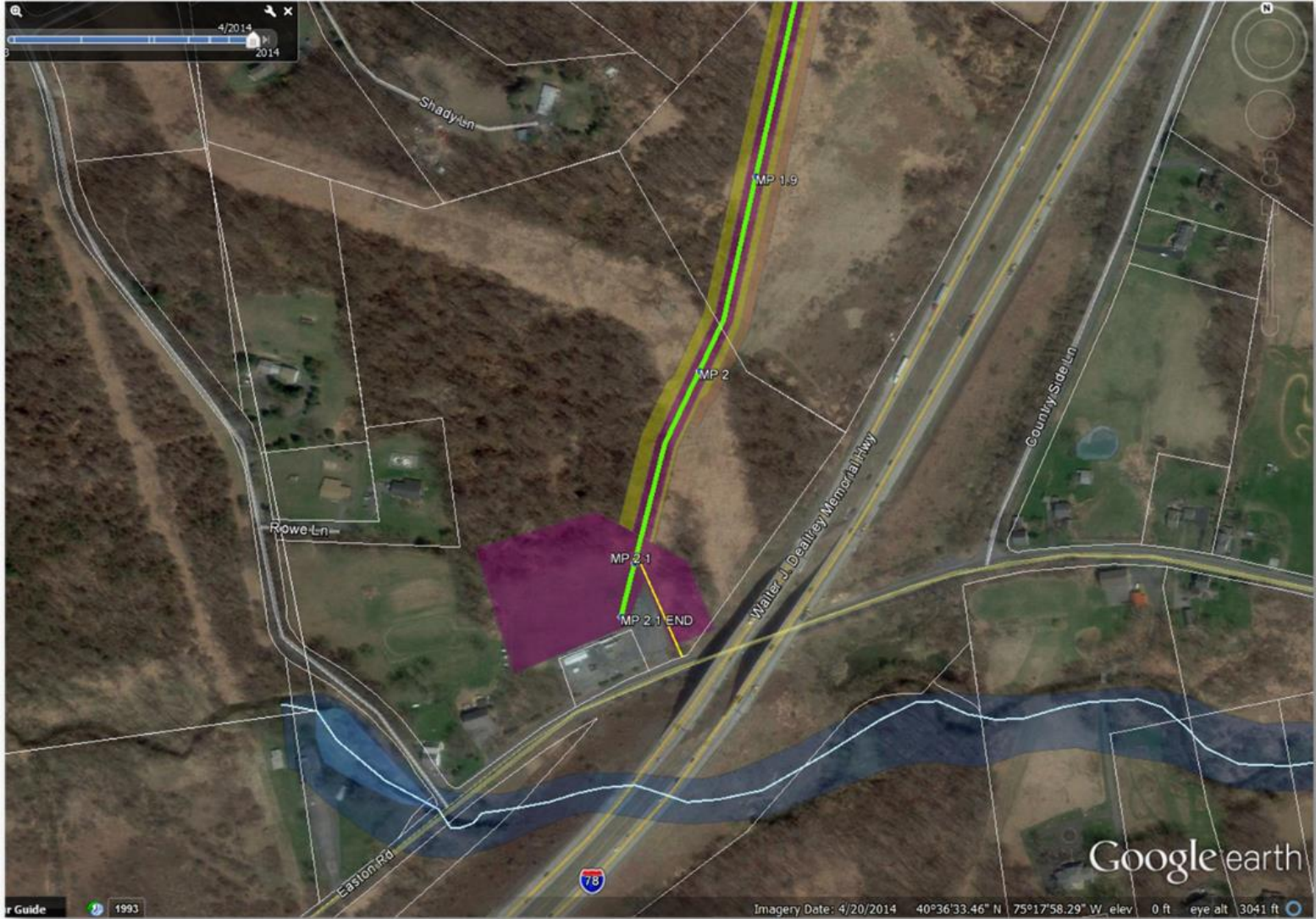
- From Luzerne County to Transco pipeline interconnection in New Jersey
- Several routes have been studied. Re-routes of pipeline required the addition of short pipeline “laterals” to connect delivery points in Hellertown, Holland Township, Lambertville areas
- Hellertown Lateral begins at mile post 68.6; 2.1 miles of 24-inch pipe; ends at an interconnection with UGI and Columbia Gas in Lower Saucon Township, Northampton County, PA



Proposed Hellertown Lateral



Proposed Hellertown Interconnection



Pipeline-related Infrastructure

- Valves
- Pig Launchers
- Metering Facilities
- Cathodic Protection Equipment



Defining the Route

- Study Corridor: 400 feet ● Orange line
- Temporary Construction Easement: ~100 feet ● Yellow area
- Permanent Easement: ~50 feet ● Purple area
- Colocation: within or adjacent existing infrastructure ● Red line
- Approximately 38% of route in PA is co-located with existing infrastructure



FERC Filing: Resource Reports

1. General Project Description
2. Water Use and Quality
3. Fisheries, Vegetation and Wildlife
4. Cultural Resources
5. Socioeconomics
6. Geological Resources
7. Soils
8. Land Use, Recreation and Aesthetics
9. Air and Noise Quality
10. Alternatives
11. Reliability and Safety
12. PCB Contamination

Results from various studies and surveys will be considered, route adjustments and mitigation efforts will be made and filed with FERC for review



FERC: Critical Energy Infrastructure Information

- **CEII is specific engineering, vulnerability, or detailed design information about proposed or existing critical infrastructure (physical or virtual) that:**
- **Relates details about the production, generation, transmission, or distribution of energy;**
- **Could be useful to a person planning an attack on critical infrastructure;**
- **Is exempt from mandatory disclosure under the Freedom of Information Act; and**
- **Gives strategic information beyond the location of the critical infrastructure.**

Construction

- Construction will begin only after obtaining FERC approval, ROW agreements and applicable environmental permits
- Typically, site preparation will avoid critical wildlife migratory and breeding seasons
- Availability of material, labor and weather also could affect the construction timeframe
- Equipment and vehicular access are within the approved temporary ROW
- More than one section will likely be under construction at one time to limit timeframe of disturbance
- Construction is expected to last approximately seven months
- Daily environmental, safety, property briefings are conducted

Restoration

- **Impacted land will be restored to its original use and condition whenever possible**
 - Work with landowners on site-restoration plans
 - ROW will be re-graded, seeded with native and approved seed mixes, and temporary erosion control devices installed
 - In agricultural areas, we will employ an Agricultural Impact Minimization Plan
- Land can be used as it was prior to construction, including farming activities, with the exception of building permanent structures or planting trees atop the ROW
- Always call 811 before you dig



**Know what's below.
Call before you dig.**

Restoration



Aug 2 2011



Restoration



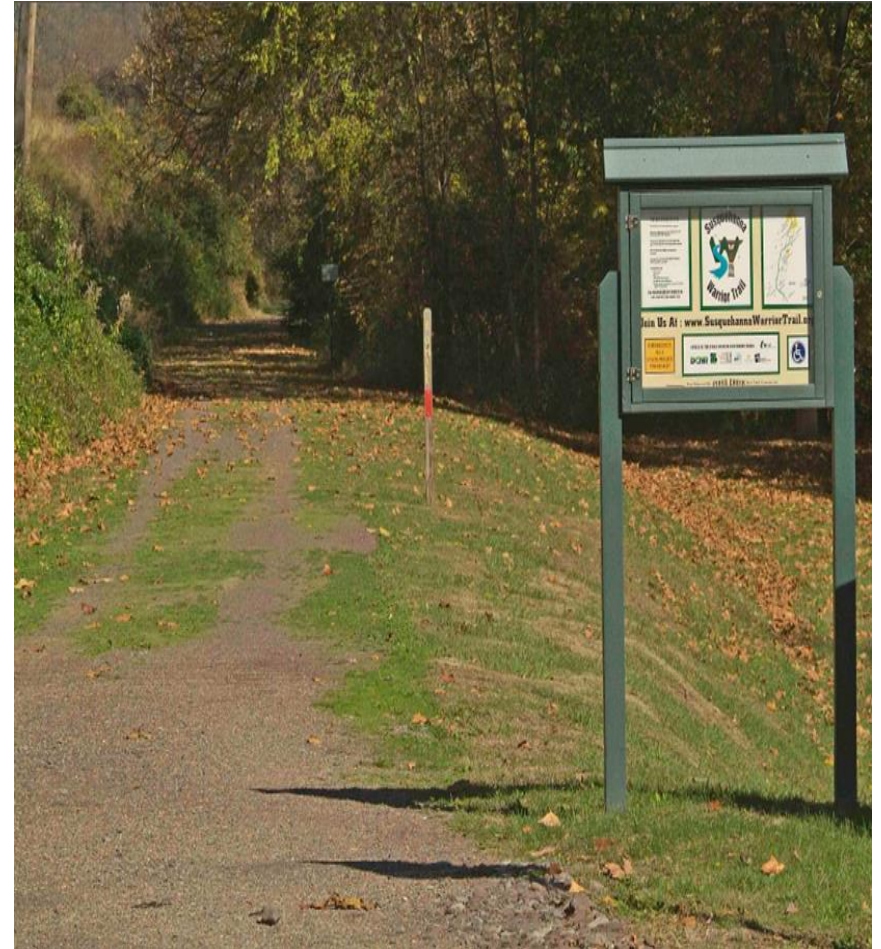
Pre-construction

Restoration



Post-construction

Restoration





Recent Study on Property Values in Northeast PA

- Studied Saddle Ridge subdivision in Dallas Township, Luzerne County from 2009-2014
- Allen, Williford & Seale Residential Study
- Subdivision developed beginning in 2005 around an existing 24-inch pipeline ROW
- Study showed undeveloped lots within the ROW sold at a 16% discount compared to lots outside the ROW
- However, existing homes within the ROW sold at a 3% premium compared to homes outside the ROW
- Conclusion: Pipeline easement has no negative impact on the sales prices of existing homes along the ROW



http://www.rightofwaymagazine-digital.org/rightofway/may_june_2015#pg34

Property Values

Google  

Web News Images Shopping Videos More ▾ Search tools

About 1,080,000 results (0.69 seconds)

[INGAA Website - Natural Gas Pipeline Impact on Land Values](http://www.ingaa.org/cms/207.aspx)

www.ingaa.org/cms/207.aspx ▾

Feb 1, 2001 - This **natural gas pipeline** impact study has been conducted at the request of the Interstate **Natural Gas** Association of America Foundation ...

[\[PDF\] The Effect of Natural Gas Pipelines on Residential Value](http://pstrust.org/docs/web_jan_NaturalGas-1.pdf)

pstrust.org/docs/web_jan_NaturalGas-1.pdf ▾

by BA DISKIN - [Related articles](#)

to determine whether the presence of **natural gas pipelines** actually **affects** ...
property value is **affected** by the particular characteristic or attribute being studied.

[\[PDF\] THE IMPACT OF NATURAL GAS PIPELINES ON ...](http://pstrust.org/docs/Pipeline_Impact_on_Property_Values.pdf)

pstrust.org/docs/Pipeline_Impact_on_Property_Values.pdf ▾

Feb 21, 2008 - variables that effect **property value** and sale price. ... To determine whether or not the **natural gas pipeline** affected value, similar sales (...

[\[PDF\] An Interstate Natural Gas Facility on my land? - Federal ...](http://www.ferc.gov/.../citiz-guide-gas....)

www.ferc.gov/.../citiz-guide-gas.... ▾ Federal Energy Regulatory Commission ▾
with evaluating whether interstate **natural gas pipeline** projects proposed by private ...
a project may **affect** you if your land is where a **natural gas pipeline**.

Pipeline Safety

- **Adopting design features and operating practices that meet or exceed stringent regulatory and industry standards**
 - Strict monitoring of all material records, construction inspections, and tests
 - Applying the latest technology in corrosion control, including a fusion-bonded coating that provides increased durability, plus cathodic protection
 - Placement of shutoff valves within 10 miles of all points on the pipeline
 - 100% X-ray of all welds during construction
- **Conducting an pressure integrity test prior to placing the line into service**
- **Monitoring gas pressures along the pipeline 24/7/365**
- **Conducting annual leak surveys**
- **“Smart Pig” technology for internal inspection**

Contact and Follow PennEast

Email:

Answers@PennEastPipeline.com

Submit

Call:

Toll-free: (844) 347-7119

Visit:

www.PennEastPipeline.com



@PennEastLine



www.facebook.com/penneast



www.youtube.com/penneastpipeline

